

## Interoception and emotion

Article (Published Version)

Critchley, Hugo D and Garfinkel, Sarah N (2017) Interoception and emotion. *Current Opinion in Psychology*, 17. pp. 7-14. ISSN 2352-250X

This version is available from Sussex Research Online: <http://sro.sussex.ac.uk/68667/>

This document is made available in accordance with publisher policies and may differ from the published version or from the version of record. If you wish to cite this item you are advised to consult the publisher's version. Please see the URL above for details on accessing the published version.

### **Copyright and reuse:**

Sussex Research Online is a digital repository of the research output of the University.

Copyright and all moral rights to the version of the paper presented here belong to the individual author(s) and/or other copyright owners. To the extent reasonable and practicable, the material made available in SRO has been checked for eligibility before being made available.

Copies of full text items generally can be reproduced, displayed or performed and given to third parties in any format or medium for personal research or study, educational, or not-for-profit purposes without prior permission or charge, provided that the authors, title and full bibliographic details are credited, a hyperlink and/or URL is given for the original metadata page and the content is not changed in any way.



ELSEVIER

# Interoception and emotion

Hugo D Critchley<sup>1,2</sup> and Sarah N Garfinkel<sup>1,2</sup>

Influential theories suggest emotional feeling states arise from physiological changes from within the body. Interoception describes the afferent signalling, central processing, and neural and mental representation of internal bodily signals. Recent progress is made in conceptualizing interoception and its neural underpinnings. These developments are supported by empirical data concerning interoceptive mechanisms and their contribution to emotion. Fresh insights include description of short-term interoceptive effects on neural and mental processes (including fear-specific cardiac effects), the recognition of dissociable psychological dimensions of interoception, and models of interoceptive predictive coding that explain emotions and selfhood (reinforced by structural anatomical models and brain and experimental findings). This growing grasp of interoception is enriching our understanding of emotion and its disorders.

## Addresses

<sup>1</sup> Psychiatry, Department of Neuroscience, Brighton and Sussex Medical School (BSMS), University of Sussex, Brighton, UK

<sup>2</sup> Sackler Centre for Consciousness Science, University of Sussex, Brighton, UK

Corresponding author: Critchley, Hugo D ([h.critchley@bsms.ac.uk](mailto:h.critchley@bsms.ac.uk))

Current Opinion in Psychology 2017, 17:7–14

This review comes from a themed issue on **Emotion**

Edited by **Batja Gomes de Mesquita** and **Lisa Feldman Barrett**

<http://dx.doi.org/10.1016/j.copsyc.2017.04.020>

2352-250X/© 2017 The Authors. Published by Elsevier Ltd. This is an open access article under the CC BY-NC-ND license (<http://creativecommons.org/licenses/by-nc-nd/4.0/>).

## Introduction

Human emotions encompass characteristic feeling states that are proposed to draw upon interoception, that is the processing and central representation of afferent internal bodily signals [1]. Emotions reflect psychophysiological modes that themselves track and steer the redirection of physiological and psychological resources to adapt behaviour. The physiological expression of emotion includes changes within internal organ systems, driven by autonomic nervous responses usually independently of volitional control. Interoceptive signals vary in motivational immediacy, yet they include information for homeostatic reflexes and for allostatic control, and include feedback of physiological changes induced by emotions. People refer to internal bodily sensations when describing their

emotional experiences, with some consistency [2]. This categorical association is likely reinforced by cultural consensus, translating perceived interoceptive responses into a social language that supports emotional understanding of self and others. However, the same interoceptive responses may be categorised emotionally in different ways [3]. The choice of descriptor can reflect how bodily arousal signals are interpreted emotionally (churning or butterflies in stomach; heart missing or skipping a beat). Nevertheless, the coupling of physiological changes to emotional experience is central to theoretical proposals arguing for an interoceptive basis to emotional feelings.

## Neural organization

Interoception refers conventionally only to afferent processing of signals that originate within the body and which refer to the state of the body. Interoception is distinct from proprioception (the processing of skeleto-motor and vestibular information about position or movement of the body) and the (proximate and distant) sensing of the environment through touch, taste, smell, sight and hearing. Interoception encompasses different classes/channels of information, distinguished by the generation of the signal (mechanoreceptive organ-stretching, chemoreception) and by afferent pathway (neural, humoral). There is crosstalk between specific channels of interoceptive information, and with exteroceptive information, at multiple nodes of the neuraxis (autonomic ganglia, spinal cord, medulla, pons hypothalamus, thalamus, basal ganglia (including amygdala) and cortex) [4]. The perceptual characteristics of different interoceptive sensations are determined by both afferent channel and signal strength. Generally, interoceptive sensations are diffusely localisable compared to somatomotor and somatosensory (including most pain) sensations. In some cases, interoceptive information is overshadowed by, or inseparable from, exteroceptive cues, for example sensations of respiration from chest wall muscle proprioceptors and upper airway somatosensation lie in the perceptual foreground relative to interoceptive signals from alveolar tissue or blood gases. In some motivationally-relevant states, interoceptive information is amplified or overtaken by the recruitment of exteroceptive pathways, for example the pain of cardiac ischaemia felt in the chest wall and upper arm [5].

Following arguments made by Craig, recent literature accommodates broad definitions of interoception, anchored less to internal physiology [6••]. These often include most bodily signals and general feeling states as interoceptive ('intero-perception' [7,8]). There is some

tension between classic physiological definitions and more experiential notions of interoception linked to older notions of vitality and coenaesthesia [7] that might arise from high level cross-modality integration removed from the body afferents. Craig's own definition of interoception is nevertheless grounded on a combination of anatomy and motivational content [6<sup>\*\*</sup>]: Information relevant to homeostatic control, physiological needs (hunger, thirst, heat, pain) and organ integrity signals are carried centrally by unmyelinated and lightly myelinated afferents that mostly ascend spinal laminar 1 spinothalamic tract. This suggests a dedicated interoceptive-motivational pathway. However, this same spinal tract contains exteroceptive touch (*e.g.* tickle, itch) and skin temperature fibres. Thus defining interoception in terms of nerve fibre type and sensory tract broadens the definition of interoception beyond its conventionally more constrained (internal physiological) boundaries.

Nevertheless, Craig's work on the central anatomy of interoceptive processing indicates a hierarchical neural organization and convergence of signals from spine and vagus nerve towards cortical representations within insular cortex [6<sup>\*\*</sup>,9]. Within the brain, different interoceptive channels share common regional neural substrates that likely permit integrative processing towards (predictive) representations that might ultimately direct adaptive behaviour [10]. However, not all signals are integrated with other modalities: Organ-specific and signal-selective afferent representations are present in insular cortex and associated 'interoceptive' cortical regions [4]. Plausibly, representational and perceptual organization of neurally-transmitted interoceptive information may resemble that observed for taste and flavour processing (not least through adjacent insular cytoarchitecture): In the granular way that cortical representation of different tastes can be distinguished and combined to permit identification of foods, the discrete and patterned representation of bodily responses likely informs different states of subjective experience that contribute to emotion-specific feelings.

### Quantifying individual differences in interoception

Bodily changes and their interoceptive signalling help constitute emotional feelings and behaviours. Hence, the emotional 'style' of individuals may reflect differences in their sensitivity to interoceptive signals. Approaches to quantify interoceptive differences include the use of questionnaires and the use of behavioural tests that either exploit natural fluctuations in internal physiological signals, or that manipulate organ physiology experimentally [5,11<sup>\*\*</sup>,12]. For practical reasons, heartbeat detection tasks are widely used measures for quantifying individual differences in interoceptive ability. These test an individual's ability to perceive their own heartbeats at rest, by counting, tapping or by judging heartbeat timing relative to an external stimulus. The psychometric

limitations of these tasks are well-described [13,14<sup>\*</sup>]. However, with necessary caution, data from these methods show face-validity, and the tests maintain wide application, if applied appropriately [15]. Correspondingly, hypotheses regarding how interoceptive ability might contribute to symptoms, or inform motivational decision-making, are often borne out [16]. Until recently, there were discrepancies in how interoceptive sensitivity or ability was measured and described. The term 'interoceptive awareness' was often used to refer to both questionnaire measures and task performance, since these both require judgements. However, a leap forward came from the proposed partitioning of interoception along three dimensions [11<sup>\*\*</sup>,17,18]. This framework argued that a distinction should be made between objective measures of interoception (*i.e.* interoceptive performance, *e.g.* behavioural score on heartbeat detection tasks) and subjective measures of interoception (how well a person thinks he/she perceives interoceptive signals, *e.g.* on self-rated confidence on heartbeat detection, or by self-reported questionnaires). Moreover, a measure of metacognitive interoceptive awareness (insight) could be derived from the correspondence between actual objective performance and subjective sense of interoceptive ability. These 'psychological dimensions of interoception' were shown to be dissociable from each other. Moreover, the degree of alignment between subjective and objective dimensions can predict emotion states and affective psychopathology [19<sup>\*</sup>]. This dimensional model of interoception can be extended further to incorporate lower level measures of afferent neural traffic (quantifying afferent signal strength, *e.g.* through heartbeat evoked potentials [20<sup>\*\*</sup>]), and the preconscious impact of interoceptive signals on sensory processing (*e.g.* modification of startle response [21<sup>\*</sup>,22] or augmentation of threat processing [23<sup>\*\*</sup>,24,25]). 'Higher' interoceptive dimensions beyond metacognition can encompass executive processes, including flexible switching of interoceptive attention (Table 1).

### Different sensory channels of interoception

A focus on cardiac afferent signalling has dominated studies of interoception. Afferent signals from other visceral organs have tended to attract specific attention in pathological conditions, for example respiration in asthma (and other obstructive airway disorders), and the stomach and bowel in eating and gastrointestinal disorders. Surprisingly, there is generally weak correspondence between measures of cardiac and respiratory interoceptive accuracy [18]. Respiratory sensation, notably dyspnoea, is largely an interoceptive feeling, since dyspnoea induced through respiratory load (or abnormal O<sub>2</sub>/CO<sub>2</sub> levels) does not depend on chest muscle feedback. Moreover, training to improved sensitivity in one axis may not improve another. For example meditative practice generally has little impact on cardiac interoceptive performance (although see Ref. [26<sup>\*</sup>]), yet experienced

**Table 1****Dimensions of human interoception**

Dimensional level	Nature	Index
Afferent signal	Neural	Visceral afferent nerve recording Intracranial recording Heartbeat evoked potential Respiratory evoked potential Neuroimaging
Preconscious impact on other processes	Behavioural, neural	Cardiac modulation of eyeblink startle Cardiac modulation of fear Respiratory modulation of memory
Accuracy	Objective behavioural performance score	Heartbeat detection tasks Respiratory resistance load detection Water Load task Balloon dilation of stomach/colon
Sensibility	Subjective self-report	Confidence measures on interoceptive tasks Questionnaires probing interoceptive sensitivity
Metacognitive	Correspondence between subjective self-report and objective performance accuracy	Receiver Operating Characteristic (ROC) curves between task performance and rated confidence Correlational measures of task and confidence scores Trait measures, for example correspondence between task performance and body perception questionnaire score
Executive	Behavioural	Shifting from interoceptive to exteroceptive attention, for example within dual tasks or between tasks.

Shaded area denotes the three psychological dimensions described by Garfinkel *et al.* [11<sup>\*\*</sup>,17,19<sup>\*</sup>].

meditators show improved respiratory interoceptive accuracy [27]. Short-term respiratory afferent signals, like cardiac afferent signals, modify defensive reflexes (notably startle responses [22]) and even nasopharyngeal airflow (an internal, yet mostly exteroceptive, respiratory stimulus) also influences processing of affective information [28<sup>\*\*</sup>]. Interestingly, at a metacognitive level, respiratory and cardiac interoceptive abilities align [18].

Among tests of gastrointestinal sensitivity, the Water Load test quantifies gastric interoceptive sensitivity from the amount of water ingested freely using an experimental protocol (recently refined [29]). Measures of gastric interoception typically correlate with heartbeat detection accuracy (unlike respiratory interoceptive accuracy) [29]. Signals from the stomach convey emotional impact beyond motivational signals of hunger and fullness, to support other affective states (notably disgust [4]). Moreover, afferent gastric signalling has other central effects, for example ‘resting’ 0.05 Hz bradycardia can entrain electrocortical rhythms [30].

Gastric signals represent only one aspect of gut-to-brain interoceptive signalling [31–33]. The whole enteric nervous system is coupled neurally to brain, mainly via the vagus nerve and spinal cord. These afferents inform the central neural regulation of gut motility and digestive function. Additional information concerning the chemical and inflammatory environment of the gut and endocrine responses to food intake, are also signalled both neural and humorally to brain [31]. Gastrointestinal information

is conveyed along similar pathways as other sources of interoceptive information, to shaping both behaviour and subjective feeling states. Gut hormones can be potent modulators of affect and motivation, and neural signals of hunger and satiety are linked to the systemic and psychological expression of stress and wellbeing [32]. Additionally, the inflammatory status of the bowel and composition of luminal gut bacteria also impact interoceptively on emotional functions [32]. Empirical findings from both basic and clinical science increasingly demonstrate the psychological influences of gut microbiota, even linking the expression of mood disorder to species of colonic microbes [33].

### Inflammation and emotional processes

Immune communication from periphery to brain represents a major component of interoception. The signalling of systemic inflammation is communicated to brain via neural (predominantly vagus nerve) pathways, humorally via circulating cytokines, and directly via immune cells. Both acute and chronic states of inflammation influence emotion through a coordinated set of motivational changes conceptualised as ‘sickness behaviours’. These include fatigue, anhedonia, social withdrawal and irritability, that is symptoms shared with depression [34]. Interestingly, central signalling of inflammation engages established interoceptive pathways to insula, but can also engage a distinct subcortical response that might better predict development of affective psychopathology [34]. Acute inflammation biases behaviour by changing sensitivity to rewards and punishments, through effects on

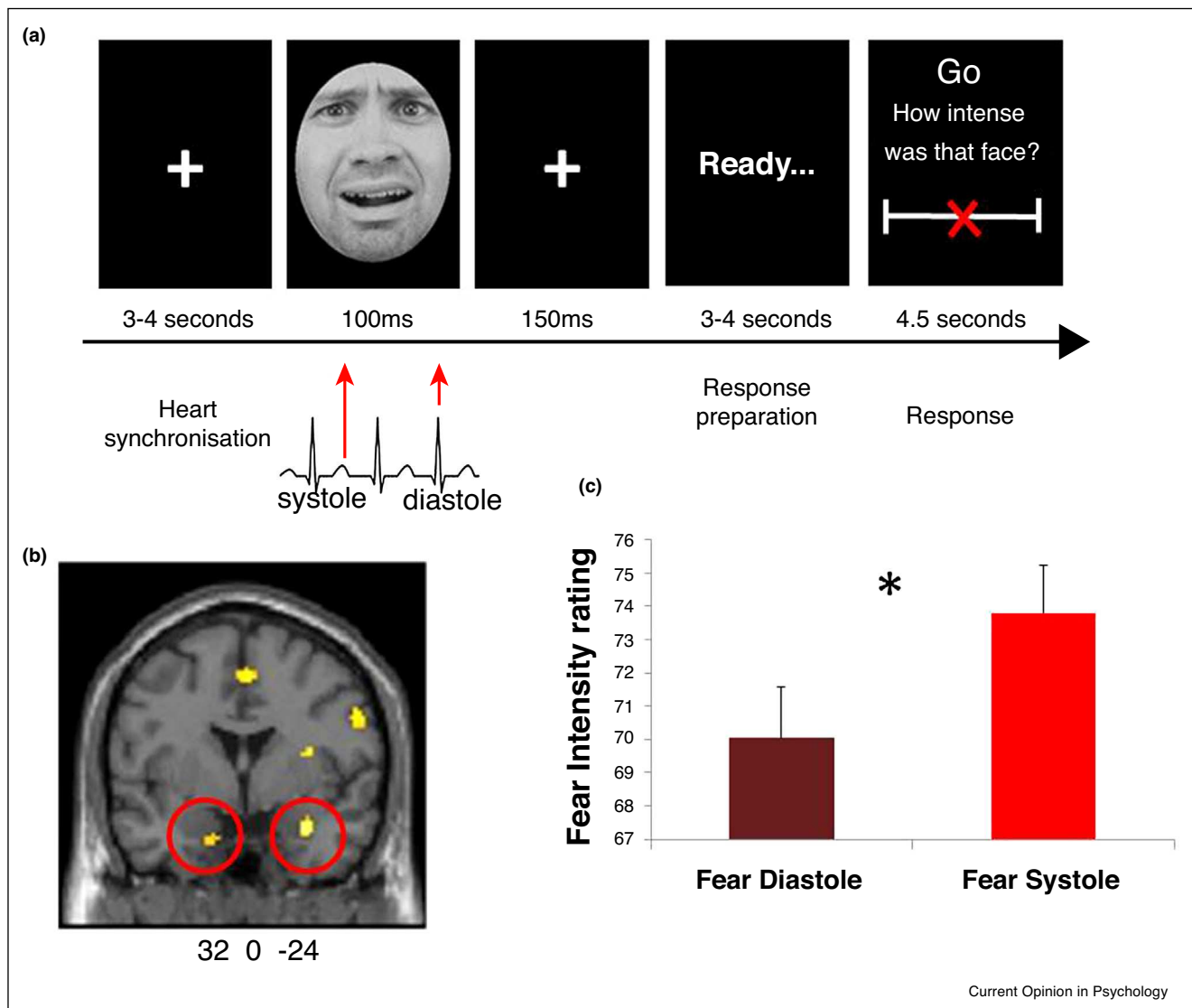
insula cortex and dopaminergic ventral striatum [35]. These effects are manifest even before marked shifts in subjective feelings are observed.

**Short-term emotional effects of interoceptive signals**

The impact of phasic interoceptive signals on emotional processes are perhaps best described for the cardiovascular channel though, as noted above, respiratory and gastric signals modulate brain responses and associated cognitive and perception. Cardiovascular arousal is signalled by arterial baroreceptors in aorta and carotids that fire with each heartbeat as ventricular contraction pumps blood out

of the heart. Thus baroreceptors signal the timing and strength of each heartbeat to brainstem via the vagus and glossopharyngeal nerves and inform the reflexive control of blood pressure through the baroreflex. In states of cardiovascular arousal (including emotional stress), the baroreflex is suppressed, allowing heartrate and blood pressure rise together. The impact of this channel of interoceptive information on brain processes can be assessed by exploiting the phasic nature of baroreceptor firing. One can compare responses to brief stimuli presented around systole, when the baroreceptors are active, to responses to stimuli presented at diastole, when the baroreceptors are quiescent. Differences can then be

Figure 1



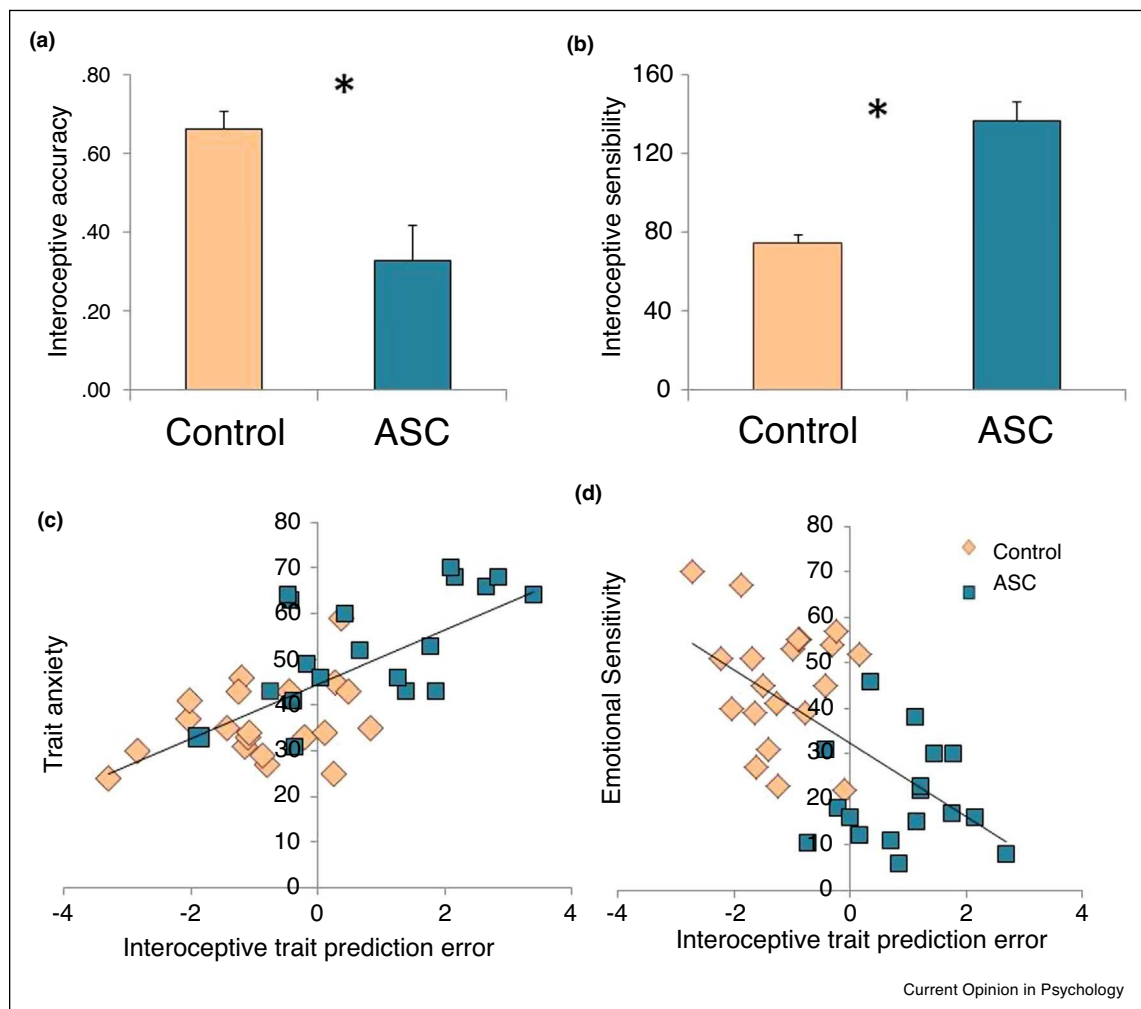
Fear and neutral faces are time-locked to distinct parts of the cardiac cycle to determine how cardiac afferent signals alter neural activity and intensity judgements (a). A cardiac cycle by emotion interaction demonstrated enhanced bilateral amygdala activation in response to fear faces at systole (b). Fear faces presented at systole were also judged as significantly more intense (c).

attributed to the presence versus absence of cardiac interoceptive signals. Historically, such experiments highlight the inhibitory nature of cardiac afferent signals. Interoceptive inhibition is also apparent in suppression of startle responses and attenuation of memory for words encoded at systole [21\*,36]. However, these baroreceptor signals amplify threat processing, enhancing the detection and perception of fear signals in others [23\*\*,24,25] (Figure 1). External manipulation of baroreceptor firing also engenders specific fear effects [37]. Similar, but weaker effects are sometimes reported for other emotions, notably disgust [38]. While such cardiac interoceptive effects are particularly observed for threat and fear stimuli [25], the impact of cardiac signals on the encoding of words does not appear to be related to whether the word is emotional [36].

### Interaction of interoceptive dimensions and clinical symptoms

Different aspects of interoception interact in how they shape emotional states and behaviours. The impact of phasic cardiac signals may be tempered by other psychological dimensions of interoception. For example individuals that perform well on heartbeat detection tasks (good 'interoceptive accuracy'), are less susceptible to the deleterious impact of cardiac signals at systole signals on memory encoding [36], yet in other contexts show an enhanced processing of self-related signals [39]. Good interoceptive accuracy is generally associated with better affective regulation [40]. Positive shifts in interoceptive accuracy induced by contemplative training are associated with an improved capacity to verbalize emotional states (decreased alexithymia [26\*]). Disruption of

Figure 2



Interoceptive accuracy was significantly impaired in the ASC group (a) despite ASC individuals having a heightened belief in their own interoceptive aptitude, as reflected by elevated interoceptive sensitivity relative to controls (b). The discrepancy between these objective and subjective measures of interoception, termed the interoceptive trait prediction error, correlated with both affective symptoms (c) and an index of emotional sensitivity (d).



interoceptive signalling [20\*\*], accuracy [41] and subjective sensibility [42] are observed in clinical disorders that impact on self-focused emotional control. Moreover, the alignment of subjective and objective components of emotion appears to predict emergence of affective symptoms. For example in people with autism, the degree of ‘mismatch’ between perceived sensitivity to interoceptive state and observed accuracy in performing an interoceptive task (heartbeat detection) predicts anxiety symptoms and deficits in interpersonal emotional interaction [19\*] (Figure 2).

### Interoception and expectation

Subjective interoceptive experience ‘interoceptive sensibility’ can be considered as an expression of a high level model or ‘belief’ for generating predictions about information coming from inside the body. Thus mismatch between subjective interoceptive sensitivity and objective interoceptive accuracy may be considered as an ‘interoceptive trait prediction error signal’. This perspective, and its observed relationship to affective symptoms [19\*], is consistent with theoretical work that presents interoception and associated emotional feeling states within a predictive coding framework [3,43,44,45\*\*,46]. The conceptualization of the brain as a ‘prediction machine’ challenges previous ascription of emotional feelings to cortical representations of viscerosensory afferent information. Instead, there is ‘reverberating’ causality: Neural encoding of generative (*i.e.* top-down) predictions concerning internal bodily state is expressed in drive to the autonomic nervous system (and in endocrine and immune responses). Efferent autonomic responses can thus be viewed as descending ‘interoceptive predictions’ through their effects on peripheral physiology [3,43,44,45\*\*,46]. These are met with ascending interoceptive neural signals that cancel predictions and inform (through prediction errors) a revision of the predicted state. Autonomic efferents represent means to probe and actively infer the internal state of the body, and both emotions and feelings arise through the interacting representational cascades of ascending prediction errors and descending bodily predictions (autonomic drive). The interoceptive sensing of internal information can thus be built upon higher predictive representations as shown by the observation that emotional feelings and reactions to interoceptive challenges will conform to ‘artificial’ categorical priors [47]. Exteroceptive and proprioceptive information also constrain and contextualise such interoceptive processing. Predictive coding models of interoception have explanatory power, both for observations on emotion, extending to self-representation and, interestingly, in accounting for both structural and functional organizational features of the brain, notably insular cortex and its relationship to visceromotor centres [3,48,39,49,43,44,45\*\*,46,50\*\*].

### Conclusions

Increasingly evidence describing how interoceptive signals influence emotional and motivational processes make it untenable to dismiss the contribution of bodily physiology to emotions as epiphenomenal. Detailed understanding of these mechanisms is important given their influence on adaptive [16] and maladaptive [51\*\*] motivational decisions and their implications for preventing and managing clinical disorders [19\*,20\*\*,21\*,34,41,42,46,50\*\*].

### Conflict of interest statement

The authors declare no conflicts of interest relation to contents of this paper.

### Acknowledgements

HDC and SNG are supported by the European Research Council ERC-2012-AdG CCFIB 324150 to HDC and by the Dr Mortimer and Theresa Sackler Foundation through a philanthropic donation to the Sackler Centre for Consciousness Science.

### References and recommended reading

Papers of particular interest, published within the period of review, have been highlighted as:

- of special interest
  - of outstanding interest
1. Tsakiris M, Critchley H: **Interoception beyond homeostasis: affect cognition and mental health.** *Philos. Trans. R. Soc. B* 2016, **371**:20160002.
  2. Nummenmaa L, Glerean E, Hari R, Hietanen JK: **Bodily maps of emotions.** *Proc. Natl. Acad. Sci. U. S. A.* 2014, **111**:646-651.
  3. Barrett LF: **The theory of constructed emotion: an active inference account of interoception and categorization.** *Soc. Cogn. Affect. Neurosci.* 2017, **12**:1-23 <http://dx.doi.org/10.1093/scan/nsw154>.
  4. Critchley HD, Harrison NA: **Visceral influences on brain and behavior.** *Neuron* 2013, **77**:624-638.
  5. Garfinkel SN, Critchley HD, Pollatos O: **The interoceptive system: implications for cognition, emotion, and health.** In *Handbook of Psychophysiology*, 4th ed.. Edited by Cacioppo J, Tassinari LG, Bertson GG. Cambridge University Press; 2015.
  6. Craig AD: **How do you feel? An Interoceptive Moment with Your** •• *Neurobiological Self.* Princeton University Press; 2016. ISBN: 97814008527.
- A comprehensive and detailed account of how the brain interacts with the body to influence emotion.
7. Ceunen E, Vlaeyen JW, Van Diest I: **On the origin of interoception.** *Front. Psychol.* 2016, **7**:743.
  8. Mehling W: **Differentiating attention styles as regulatory aspects of self-reported interoceptive sensibility.** *Philos. Trans. R. Soc. B* 2016, **371**:20160013.
  9. Strigo IA, Craig AD: **Interoception, homeostatic emotions and sympathovagal balance.** *Philos. Trans. R. Soc. B* 2016, **371**:20160010.
  10. Kleckner IR, Zhang J, Touroutoglou A, Chanes L, Xia Chengjie, Simmons WK, Quigley KS, Dickerson BC, Barrett LF: **Evidence for a large-scale brain system supporting allostasis and interoception in humans.** *Nat. Hum. Behav.* 2017, **1**:0069.
  11. Garfinkel SN, Seth AK, Barrett AB, Suzuki K, Critchley HD: •• **Knowing your own heart: distinguishing interoceptive accuracy from interoceptive awareness.** *Biol. Psychol.* 2015, **104**:65-74.

This paper demonstrates the importance of how interoception is tested. It highlights that subjective self-report of perceived interoceptive aptitude,

objective behavioural tests of interoceptive ability, and metacognitive insight into interoception are dissociable.

12. Hassanpour MS, Yan L, Wang DJJ, Lapidus RC, Arevian AC, Simmons WK, Feusner JD, Khalsa SS: **How the heart speaks to the brain: neural activity during cardiorespiratory interoceptive stimulation.** *Philos. Trans. R. Soc. B* 2016, **371**:20160017 <http://dx.doi.org/10.1098/rstb.2016.0017>.
  13. Brener J, Ring C: **Towards a psychophysics of interoceptive processes: the measurement of heartbeat detection.** *Philos. Trans. R. Soc. B* 2016, **371**:20160015.
  14. Ring C, Brener J, Knapp K, Mailloux J: **Effects of heartbeat feedback on beliefs about heart rate and heartbeat counting: a cautionary tale about interoceptive awareness.** *Biol. Psychol.* 2015, **104**:193-198.
- This work highlights methodological constraints and limitations of one of the key interoceptive tests, specifically demonstrating that beliefs about heart rate can influence interoception performance during the heartbeat tracking/counting task.
15. Kleckner IR, Wormwood JB, Simmons WK, Barrett LF, Quigley KS: **Methodological recommendations for a heartbeat detection-based measure of interoceptive sensitivity.** *Psychophysiology* 2015, **52**:1432-1440.
  16. Kandasamy N, Garfinkel S, Page L, Hardy B, Critchley H, Gurnell M, Coates J: **Gut feelings and the market. Interoceptive ability predicts survival on a London trading floor.** *Sci. Rep.* 2016, **6**:32986.
  17. Garfinkel SN, Critchley HD: **Interoception, emotion and brain: new insights link internal physiology to social behavior.** *Soc. Cogn. Affect. Neurosci.* 2013, **8**:231-234.
  18. Garfinkel SN, Manassei MF, Hamilton-Fletcher G, In den Bosch Y, Critchley HD, Engels M: **Interoceptive dimensions across cardiac and respiratory axes.** *Philos. Trans. R. Soc. B* 2016, **371**:20160014.
  19. Garfinkel SN, Tilly C, O'Keeffe S, Harrison NA, Seth AK, Critchley HD: **Discrepancies between dimensions of interoception in autism: implications for emotion and anxiety.** *Biol. Psychol.* 2016, **114**:117-126.
- This work demonstrates altered interoceptive dimensions in a clinical population with impaired emotion processing (autism), with reduced interoceptive accuracy manifesting in the presence of elevated interoceptive sensibility.
20. Müller LE, Schulz A, Andermann M, Gäbel A, Gescher DM, Spohn A, Herpertz SC, Bertsch K: **Cortical representation of afferent bodily signals in borderline personality disorder: neural correlates and relationship to emotional dysregulation.** *JAMA Psychiatry* 2015, **72**:1077-1086.
- Highlights the importance of interoceptive measures in clinical populations manifesting in the brain: demonstrates HEP signal is altered in a clinical population with emotion dysregulation (borderline personality disorder).
21. Schulz A, Matthey JH, Vögele C, Schaan V, Schächinger H, Adler J, Beutel ME, Michal M: **Cardiac modulation of startle is altered in depersonalization-/derealization disorder: evidence for impaired brainstem representation of baro-afferent neural traffic.** *Psychiatry Res.* 2016, **240**:4-10.
- This work elegantly demonstrates reduced capacity for cardiac modulation of a behavioural reflex response in depersonalization-/derealization disorder, with implications for reduced visceral-afferent neural signals in this population.
22. Schulz A, Schilling TM, Vögele C, Larra MF, Schächinger H: **Respiratory modulation of startle eye blink: a new approach to assess afferent signals from the respiratory system.** *Philos. Trans. R. Soc. B* 2016, **371**:20160019.
  23. Garfinkel SN, Minati L, Gray MA, Seth AK, Dolan RJ, Critchley HD: **Fear from the heart: sensitivity to fear stimuli depends on individual heartbeats.** *J. Neurosci.* 2014, **34**:6573-6582.
- This work highlights how cardiac afferent signals can influence fear perception, fear signal in brain (amygdala) and emotional intensity judgments, thus directly linking cardiac afferent information with neural and behavioural indexes of emotion.
24. Garfinkel SN, Critchley HD: **Threat and the body: how the heart supports fear processing.** *Trends Cogn. Sci.* 2016, **20**:34-46.
  25. Critchley HD, Garfinkel SN: **Interactions between visceral afferent signaling and stimulus processing.** *Front. Neurosci.* 2015, **9**:286.
  26. Bornemann B, Singer T: **Taking time to feel our body: steady increases in heartbeat perception accuracy and decreases in alexithymia over 9 months of contemplative mental training.** *Psychophysiology* 2017, **54**:469-482 <http://dx.doi.org/10.1111/psyp.12790>.
- This manuscript demonstrates the coupling of improved interoceptive accuracy with a reduction in alexithymia and an increase in emotional awareness.
27. Daubenmier J, Sze J, Kerr CE, Kemeny ME, Mehling W: **Follow your breath: respiratory interoceptive accuracy in experienced meditators.** *Psychophysiology* 2013, **50**:777-789.
  28. Zelano C, Jiang H, Zhou G, Arora N, Schuele S, Rosenow J, Gottfried JA: **Nasal respiration entrains human limbic oscillations and modulates cognitive function.** *J. Neurosci.* 2016, **36**:12448-12467.
- Novel work demonstrating an interesting link between respiration and fear processing.
29. van Dyck Z, Vögele C, Blechert J, Lutz AP, Schulz A, Herbert BM: **The water load test as a measure of gastric interoception: development of a two-stage protocol and application to a healthy female population.** *PLoS One* 2016, **11**:e0163574 <http://dx.doi.org/10.1371/journal.pone.0163574>.
  30. Richter CG, Babo-Rebello M, Schwartz D, Tallon-Baudry C: **Phase-amplitude coupling at the organism level: the amplitude of spontaneous alpha rhythm fluctuations varies with the phase of the infra-slow gastric basal rhythm.** *Neuroimage* 2017, **146**:951-958 pii: S1053-8119(16)30428-1.
  31. Mayer EA: **Gut feelings: the emerging biology of gut-brain communication.** *Nat. Rev. Neurosci.* 2011, **12**:453-466.
  32. Mayer EA, Knight R, Mazmanian SK, Cryan JF, Tillisch K: **Gut microbes and the brain: paradigm shift in neuroscience.** *J. Neurosci.* 2014, **34**:15490-15496.
  33. Dinan TG, Cryan JF: **Mood by microbe: towards clinical translation.** *Genome Med.* 2016, **8**:36.
  34. Harrison NA: **Brain structures implicated in inflammation-associated depression.** *Curr. Top. Behav. Neurosci.* 2017, **31**:221-248 [http://dx.doi.org/10.1007/7854\\_2016\\_30](http://dx.doi.org/10.1007/7854_2016_30).
  35. Harrison NA, Voon V, Cercignani M, Cooper EA, Pessiglione M, Critchley HD: **A neurocomputational account of how inflammation enhances sensitivity to punishments versus rewards.** *Biol. Psychiatry* 2016, **80**:73-81.
  36. Garfinkel SN, Barrett AB, Minati L, Dolan RJ, Seth AK, Critchley HD: **What the heart forgets: cardiac timing influences memory for words and is modulated by metacognition and interoceptive sensitivity.** *Psychophysiology* 2013, **50**:505-512.
  37. Makovac E, Garfinkel SN, Bassi A, Basile B, Macaluso E, Cercignani M, Calcagnini G, Mattei E, Agalliu D, Cortelli P, Caltagirone C, Bozzali M, Critchley H: **Effect of parasympathetic stimulation on brain activity during processing of fearful expressions.** *Neuropsychopharmacology* 2015, **40**:1649-1658 <http://dx.doi.org/10.1038/npp.2015.10>.
  38. Gray MA, Beacher FD, Minati L, Nagai Y, Kemp AH, Harrison NA, Critchley HD: **Emotional appraisal is influenced by cardiac afferent information.** *Emotion* 2012, **12**:180-191.
  39. Suzuki K, Garfinkel SN, Critchley HD, Seth A: **Multisensory integration across exteroceptive and interoceptive domains modulates self-experience in the rubber-hand illusion.** *Neuropsychologia* 2013, **51**:2909-2917.
  40. Füstös J, Gramann K, Herbert BM, Pollatos O: **On the embodiment of emotion regulation: interoceptive awareness facilitates reappraisal.** *Soc. Cogn. Affect. Neurosci.* 2013, **8**:911-917.
  41. Pollatos O, Herbert BM, Berberich G, Zaudig M, Krauseneck T, Tsakiris M: **Atypical self-focus effect on interoceptive accuracy in anorexia nervosa.** *Front. Hum. Neurosci.* 2016, **10**:484.



42. Brewer R, Cook R, Bird G: **Alexithymia: a general deficit of interoception**. *R. Soc. Open Sci.* 2016, **3**:150664.
43. Seth AK: **Interoceptive inference, emotion, and the embodied self**. *Trends Cogn. Sci.* 2013, **17**:565-573.
44. Seth AK, Friston KJ: **Active interoceptive inference and the emotional brain**. *Philos. Trans. R. Soc. B* 2016, **371**:20160007.
45. Barrett LF, Simmons WK: **Interoceptive predictions in the brain**.  
 •• *Nat. Rev. Neurosci.* 2015, **16**:419-429.  
 Important theoretical contribution regarding interoception and the brain.
46. Barrett LF, Quigley KS, Hamilton P: **An active inference theory of allostasis and interoception in depression**. *Philos. Trans. R. Soc. B* 2016, **371**:20160011.
47. Petersen S, Schroijen M, Mölders C, Zenker S, Van den Bergh O: **Categorical interoception: perceptual organization of sensations from inside**. *Psychol. Sci.* 2014, **25**:1059-1066.
48. Ainley V, Apps MAJ, Fotopoulou A, Tsakiris M: **'Bodily precision': a predictive coding account of individual differences in interoceptive accuracy**. *Philos. Trans. R. Soc. B* 2016, **371**:20160003.
49. Tajadura-Jiménez A, Tsakiris M: **Balancing the "inner" and the "outer" self: interoceptive sensitivity modulates self-other boundaries**. *J. Exp. Psychol. Gen.* 2013, **143**:736.
50. Stephan KE, Manjaly ZM, Mathys CD, Weber LA, Paliwal S, Gard T, Tittgemeyer M, Fleming SM, Haker H, Seth AK, Petzschner FH: **Allostatic self-efficacy: a metacognitive theory of dyshomeostasis-induced fatigue and depression**. *Front. Hum. Neurosci.* 2016, **10**.  
 A powerful application of a Bayesian framework to interoception and fatigue.
51. Azevedo R, Garfinkel SN, Critchley HD, Tsakiris M: **Cardiac afferent activity modulates the expression of racial stereotypes**. *Nat. Commun.* 2017, **8**:13854.  
 Highlights the wide-reaching implications of cardiac afferent signaling, with particular relevance to enhanced racial stereotypes leading to weapon misidentification resulting in mistaken decisions to "shoot".