

## The XMM Cluster Survey: The Dynamical State of XMMXCS J2215.9-1738 at $z = 1.457$

Article (Published Version)

Hilton, Matt, Collins, Chris A, Stanford, S Adam, Lidman, Chris, Liddle, Andrew, Romer, Kathy and et al, (2007) The XMM Cluster Survey: The Dynamical State of XMMXCS J2215.9-1738 at  $z = 1.457$ . *Astrophysical Journal*, 670 (2). pp. 1000-1009. ISSN 0004-637X

This version is available from Sussex Research Online: <http://sro.sussex.ac.uk/id/eprint/16246/>

This document is made available in accordance with publisher policies and may differ from the published version or from the version of record. If you wish to cite this item you are advised to consult the publisher's version. Please see the URL above for details on accessing the published version.

### **Copyright and reuse:**

Sussex Research Online is a digital repository of the research output of the University.

Copyright and all moral rights to the version of the paper presented here belong to the individual author(s) and/or other copyright owners. To the extent reasonable and practicable, the material made available in SRO has been checked for eligibility before being made available.

Copies of full text items generally can be reproduced, displayed or performed and given to third parties in any format or medium for personal research or study, educational, or not-for-profit purposes without prior permission or charge, provided that the authors, title and full bibliographic details are credited, a hyperlink and/or URL is given for the original metadata page and the content is not changed in any way.

## THE *XMM* CLUSTER SURVEY: THE DYNAMICAL STATE OF XMMXCS J2215.9–1738 AT $z = 1.457$

MATT HILTON,<sup>1,2</sup> CHRIS A. COLLINS,<sup>1</sup> S. ADAM STANFORD,<sup>3,4</sup> CHRIS LIDMAN,<sup>5</sup> KYLE S. DAWSON,<sup>6</sup> MICHAEL DAVIDSON,<sup>7</sup>  
SCOTT T. KAY,<sup>8</sup> ANDREW R. LIDDLE,<sup>9</sup> ROBERT G. MANN,<sup>7</sup> CHRISTOPHER J. MILLER,<sup>10</sup> ROBERT C. NICHOL,<sup>11</sup>  
A. KATHY ROMER,<sup>9</sup> KIVANC SABIRLI,<sup>12</sup> PEDRO T. P. VIANA,<sup>13,14</sup> AND MICHAEL J. WEST<sup>15</sup>

Received 2007 May 31; accepted 2007 August 23

### ABSTRACT

We present new spectroscopic observations of the most distant X-ray-selected galaxy cluster currently known, XMMXCS J2215.9–1738 at  $z = 1.457$ , obtained with the DEIMOS instrument at the W. M. Keck Observatory and the FORS2 instrument on the ESO Very Large Telescope. Within the cluster virial radius, as estimated from the cluster X-ray properties, we increase the number of known spectroscopic cluster members to 17 objects, and calculate the line-of-sight velocity dispersion of the cluster to be  $580 \pm 140 \text{ km s}^{-1}$ . We find mild evidence that the velocity distribution of galaxies within the virial radius deviates from a single Gaussian. We show that the properties of J2215.9–1738 are inconsistent with self-similar evolution of local X-ray scaling relations, finding that the cluster is underluminous given its X-ray temperature, and that the intracluster medium contains  $\sim 2\text{--}3$  times the kinetic energy per unit mass of the cluster galaxies. These results can perhaps be explained if the cluster is observed in the aftermath of an off-axis merger. Alternatively, heating of the intracluster medium through supernovae and/or active galactic nucleus activity, as is required to explain the observed slope of the local X-ray luminosity–temperature relation, may be responsible.

*Subject headings:* galaxies: clusters: individual (XMMXCS J2215.9–1738) — X-rays: galaxies: clusters

### 1. INTRODUCTION

Galaxy clusters are both important cosmological probes and places in which to study the effects of environment on galaxy evolution. As the most massive gravitationally bound structures in the universe, clusters are the last objects to form in the hierarchy of structure formation, and their abundance and spatial distribution is therefore extremely sensitive to the matter density of the universe (see Voit 2005a for a recent review). Cluster catalogs constructed from surveys at X-ray wavelengths provide a powerful tool with which to test cosmological models, because X-ray observables, such as luminosity and temperature, are readily related to cluster mass. X-ray surveys conducted with the *ROSAT* satellite showed that the universe is low density ( $\Omega_m \approx 0.3$ ), from the

observed spatial distribution of clusters (Collins et al. 2000) and the cluster mass function (Borgani et al. 2001; Reiprich & Böhringer 2002; Schuecker et al. 2003). Cluster surveys reaching to high redshift ( $z \sim 1$ ) are able to constrain the dark energy density, through the observed evolution in the mass function with redshift (e.g., Carlstrom et al. 2002; Mohr 2005; Romer et al. 2001). Studies of the gas mass fraction within clusters can also be used to measure the dark energy density (e.g., Allen et al. 2004). It is important to note that these constraints are independent of those obtained from cosmic microwave background observations (e.g., Spergel et al. 2007) or surveys using type Ia supernovae as standard candles (e.g., Astier et al. 2006; Riess et al. 2007; Wood-Vasey et al. 2007; for a compilation of all supernova surveys see M. Kowalski et al. 2007, in preparation).

However, to infer cosmological parameter estimates from X-ray-selected cluster samples, it is essential that the redshift evolution of the mass-scaling relations with luminosity ( $L_X$ ) and temperature ( $T$ ) are understood, as evolution unaccounted for in the properties of the intracluster medium (ICM) would lead to an erroneous determination of evolution in the mass function. Although it is agreed that the slope of the  $L_X$ – $T$  relation is not consistent with the expectation of “self-similar” evolution of the ICM, where gravity is the sole process responsible for setting the observed properties (Kaiser 1986), investigations to date, using cluster samples that reach to  $z \sim 1$ , do not reach consensus as to the form of the evolution of this relation. Several authors (Vikhlinin et al. 2002; Lumb et al. 2004; Maughan et al. 2006a) find evidence that the  $L_X$ – $T$  relation evolves in a way consistent with self-similar evolution, while others suggest that the evolution is much milder, perhaps even negative (Ettori et al. 2004). However, the large amount of intrinsic scatter in the relation means that the only way in which a firm conclusion can be drawn is by extending such studies to include the  $z > 1$  cluster population, as evolution predictions in models that include the effects of different nongravitational heating processes on the ICM deviate significantly at such redshifts (Muanwong et al. 2006; Maughan et al. 2006a).

<sup>1</sup> Astrophysics Research Institute, Liverpool John Moores University, Twelve Quays House, Egerton Wharf, Birkenhead, CH41 1LD, UK.

<sup>2</sup> Current address: Astrophysics and Cosmology Research Unit, School of Mathematical Sciences, University of KwaZulu-Natal, Westville Campus, Private Bag X54001, Durban 4000, South Africa; hiltonm@ukzn.ac.za.

<sup>3</sup> University of California, Davis, CA 95616; adam@igpp.ucllnl.org.

<sup>4</sup> Institute of Geophysics and Planetary Physics, Lawrence Livermore National Laboratory, Livermore, CA 94551.

<sup>5</sup> European Southern Observatory, Vitacura, Santiago 19, Chile.

<sup>6</sup> E. O. Lawrence Berkeley National Laboratory, Berkeley, CA 94720.

<sup>7</sup> Institute of Astronomy, University of Edinburgh, Blackford Hill, Edinburgh, EH9 9HJ, UK.

<sup>8</sup> University of Manchester, Jodrell Bank Observatory, Macclesfield, Cheshire, SK11 9DL, UK.

<sup>9</sup> Astronomy Centre, University of Sussex, Falmer, Brighton, BN1 9QH, UK.

<sup>10</sup> Cerro-Tololo Inter-American Observatory, National Optical Astronomy Observatory, 950 North Cherry Avenue, Tucson, AZ 85719.

<sup>11</sup> Institute of Cosmology and Gravitation, University of Portsmouth, Portsmouth, PO1 2EG, UK.

<sup>12</sup> Department of Physics, Carnegie Mellon University, 5000 Forbes Avenue, Pittsburgh, PA 15217.

<sup>13</sup> Departamento de Matemática Aplicada da Faculdade de Ciências da Universidade do Porto, Rua do Campo Alegre, 687, 4169-007, Portugal.

<sup>14</sup> Centro de Astrofísica da Universidade do Porto, Rua das Estrelas, 4150-762, Porto, Portugal.

<sup>15</sup> Gemini Observatory, Casilla 603, La Serena, Chile.

TABLE 1  
SPECTROSCOPIC OBSERVATIONS LOG

Mask	Slits	Grating+Filter	Frames (s <sup>-1</sup> )	Air Mass	Date (UT)
Keck II (DEIMOS)					
1.....	81	600ZD+OG550	5 × 1800	1.5	2006 Sep 16
2.....	143	600ZD+OG550	8 × 1800	1.3	2006 Sep 20
3.....	141	600ZD+OG550	7 × 1800	1.3	2006 Sep 21
Antu (FORS2)					
1.....	11	300I+OG590	9 × 900	1.2	2006 Jul 4
2.....	12	300I+OG590	6 × 900	1.2	2006 Oct 20
3.....	12	300I+OG590	3 × 900	1.4	2006 Oct 21
4.....	12	300I+OG590	9 × 900	1.1	2006 Nov 15–18

The search for galaxy clusters at  $z > 1$  is also crucial for increasing our understanding of the processes that shaped the evolution of the elliptical galaxies that dominate the cluster population, at least up to  $z \sim 1.3$  (Blakeslee et al. 2003), because the epoch of cluster formation is expected to be  $1 < z < 2$  in the  $\Lambda$ CDM cosmology. However, to date, few objects have been discovered at such high redshifts (Andreon et al. 2005; Bremer et al. 2006; Brodwin et al. 2006; Hashimoto et al. 2004; Mullis et al. 2005; Rosati et al. 1999, 2004; Stanford et al. 1997, 2002, 2005).

In this paper we report new spectroscopic observations of XMMXCS J2215.9–1738 at  $z = 1.457$  (Stanford et al. 2006), which was identified as an extended X-ray source in the *XMM* Cluster Survey (XCS<sup>16</sup>; Romer et al. 2001), an ongoing serendipitous search for galaxy clusters in the *XMM-Newton* Science Archive (XSA).<sup>17</sup> XCS has the principal aim of measuring the cosmological parameters  $\sigma_8$  (the variance of the mass density on a scale of 8 Mpc, i.e., the normalization of the dark matter power spectrum),  $\Omega_m$ , and  $\Omega_\Lambda$ . Spectroscopic follow-up of J2215.9–1738 with the Deep Imaging Multi-Object Spectrograph (DEIMOS; Faber et al. 2003) on the 10 m Keck II telescope secured six galaxies with concordant redshifts at  $z = 1.45$  within  $30''$  of the cluster X-ray centroid. The cluster was found to have bolometric X-ray luminosity  $L_X = 4.39^{+0.46}_{-0.37} \times 10^{44}$  ergs s<sup>-1</sup>, and temperature  $kT = 7.4^{+1.6}_{-1.1}$  keV, making it the hottest cluster known at  $z > 1$  (Stanford et al. 2006 note that throughout this paper all quoted X-ray luminosities are bolometric, and we quote all uncertainties as 68% confidence limits).

The structure of this paper is as follows. In § 2 we describe observations of J2215.9–1738 performed at the W. M. Keck Observatory and the ESO Very Large Telescope (VLT). We describe the data reduction and redshift measurements in §§ 3 and 4. In § 5 we present the newly identified cluster members, the cluster velocity distribution, and the measurement of the line-of-sight velocity dispersion. In § 6 we discuss the relationships between the velocity dispersion of J2215.9–1738 and its X-ray properties.

We assume a concordance cosmology of  $\Omega_m = 0.3$ ,  $\Omega_\Lambda = 0.7$ , and  $H_0 = 70$  km s<sup>-1</sup> Mpc<sup>-1</sup> throughout, where  $\Omega_\Lambda$  is the energy density associated with a cosmological constant.

## 2. OBSERVATIONS

Spectroscopic observations were obtained using the DEIMOS instrument on Keck II, and the Focal Reducer and Low Dispersion Spectrograph (FORS2; Appenzeller et al. 1998) on the 8 m

ESO Very Large Telescope (VLT) Unit 1 (Antu). Both of these instruments are capable of conducting multiobject spectroscopy (MOS), using custom designed slit masks. The capabilities of each instrument vary significantly: DEIMOS covers a  $16.7' \times 5.0'$  field of view and can use masks with  $>100$  slitlets; FORS2 has a field of view of  $6.8' \times 6.8'$ , and in MOS mode (as used for our observations) can target up to 19 objects simultaneously using a series of moveable slitlets. Both instruments have very red sensitive CCD detectors with quantum efficiency  $\sim 50\%$  at 9500 Å.

As described in Stanford et al. (2006) target galaxies for spectroscopic observations were selected to lie in the appropriate region of the  $K_s$ ,  $I-K_s$  color-magnitude diagram for the red sequence of a  $z = 1.45$  cluster—i.e., with  $I > 22$ ,  $I - K > 4$  (magnitudes are on the Vega system). The faintest galaxy for which a secure redshift measurement was obtained has a magnitude of  $I = 23.9$ . We describe the observations obtained with each telescope in turn below. Table 1 presents a log of the observations.

### 2.1. Keck

For all our Keck observations, DEIMOS was used with the OG550 order sorting filter and the 600ZD grating, which is blazed at 7500 Å, has dispersion of  $0.65$  Å pixel<sup>-1</sup>, and provides typical wavelength coverage of 5000–10000 Å. Slits of width  $1''$  and minimum length  $5''$  were used. In 2006, we have obtained observations using three new slit masks covering the field of J2215.9–1738 using DEIMOS. On UT 2006 September 16,  $5 \times 1800$  s of exposure were obtained on behalf of the XCS team by P. Guhathakurta. Observations using two further masks were obtained on UT 2006 September 20 and 21, during which weather conditions were reasonable (some thin cirrus) and seeing was good (typically  $0.6''$ – $0.8''$ ). As the seeing was less than the slit width, the spectral resolution of the DEIMOS data varied between  $3.3$ – $5.5$  Å, which is sufficient to resolve the  $3727$  Å [O II] emission line into two components at the redshift of the cluster. We obtained  $8 \times 1800$  s exposures on September 20, and  $7 \times 1800$  s exposures on September 21.

### 2.2. VLT

*Hubble Space Telescope* (HST) Advanced Camera for Surveys (ACS) observations of J2215.9–1738 have been obtained through a program designed to place constraints on the dark energy through observations of high-redshift Type Ia supernovae.<sup>18</sup>

<sup>18</sup> Based on observations made with the NASA/ESA *Hubble Space Telescope*, obtained from the data archive at the Space Telescope Institute. STScI is operated by the association of Universities for Research in Astronomy, Inc. under the NASA contract NAS 5-26555. The observations are associated with program 10496.

<sup>16</sup> See <http://www.xcs-home.org>.

<sup>17</sup> See <http://xmm.vilspa.esa.es/xsa>.

The program targeted several  $z > 1$  clusters, because the elliptical galaxies they contain are relatively free of dust, which is one of the largest sources of systematic and statistical uncertainty in using Type Ia supernovae for cosmology. A Type Ia supernova candidate was detected in ACS imaging of J2215.9–1738 on UT 2006 June 19, and prompted follow-up spectroscopic observations by the supernova survey team using the FORS2 instrument on VLT Unit 1.

For the VLT observations, FORS2 was used with the 300I grism and the OG590 order sorting filter. This configuration has a dispersion of  $3.2 \text{ \AA pixel}^{-1}$  and provides a wavelength range starting from  $5900 \text{ \AA}$  and extending to approximately  $10000 \text{ \AA}$ . Since the observations had to be carried out at short notice (the SN had to be observed before it faded from view), the observations were done with the MOS mode of FORS2. The MOS mode consists of 19 moveable slits with lengths that vary between  $20''$ – $22''$ . The slit width was set to  $1''$ . All the data were taken during clear nights and in  $0.6''$ – $1.1''$  seeing. Since the seeing was often narrower than the slit width, the resolution of the FORS2 spectra varies between  $7.7$ – $12.8 \text{ \AA}$ .

The field of J2215.9–1738 was observed with four different MOS configurations. The first configuration was used when the SN was near maximum light. The other three configurations were done several months later when the SN was significantly fainter. In all masks, a slit was placed on the SN and the host galaxy, thus a spectrum of the SN with the host and a spectrum of the host alone was obtained. The other slits were placed on candidate cluster members or field galaxies. For each MOS set-up, between three to nine 900 s exposures were taken. Between each exposure, the telescope was moved a few arcseconds along the slit direction. These offsets, which shift the spectra along detector columns, were done for two reasons: first, they minimize the possibility that an object is lost because its spectrum lands on a bad row in one of the detectors; and second, the data can then be used in fringe removal, the process of which is described in further detail in § 3.2.

A total of 47 slits across four MOS masks were used to observe 28 independent targets, one of which was an alignment star that was common to all masks. Some target candidate cluster members were also observed in more than one mask. Note that these duplicate observations were not used to infer the uncertainty in the subsequently described redshift measurements: the target objects in question were simply faint. From 27 slits (excluding the one that was placed on the star), 41 redshifts were obtained. The reason for the high-redshift efficiency is that the MOS slits are relatively long and there is often more than one target in the slit, resulting in a high number of serendipitous redshifts.

### 3. DATA REDUCTION

#### 3.1. Keck

The DEIMOS data were reduced using version 1.1.4 of `spec2d`, the automated data reduction pipeline developed by the DEEP2 galaxy redshift survey team (Davis et al. 2003). First, the flat and wavelength calibration frames are processed and the location of slitlets identified. A two-dimensional wavelength solution is computed for each slitlet using the wavelength calibration images and the DEIMOS optical model. We found that the wavelength calibration is accurate to approximately  $0.07 \text{ \AA}$ , from a comparison of the locations of several bright OH sky emission lines in a subset of the object spectra with the tables of Osterbrock & Martel (1992). At the next stage the science frames are processed: the data are bias subtracted, flat-fielded, and a spline model of the sky spectrum in each slitlet is constructed. No correction is made for

fringing effects at red wavelengths, as this is not a significant feature of spectra obtained with DEIMOS. The science frames are then combined to produce a mean, sky-subtracted two-dimensional spectrum cleaned of cosmic rays for each slit. The pipeline extracts one-dimensional spectra for each object using both a boxcar and an optimal extraction algorithm (Horne 1986); we chose to use the optimally extracted spectra in all that follows.

#### 3.2. VLT

The FORS2 detector consists of two  $2k \times 4k$  E2V CCDs. Each chip was processed separately. The bias subtraction, flat-fielding, and wavelength calibration of the FORS2 data were done in a standard manner. The bias was estimated by fitting low-order polynomials to the overscan regions. The flat fields were created from the lamp flats, and the wavelength calibration was done with arc frames. Several bright OH lines were used to check the wavelength calibration. There were no systematic offsets and the rms scatter in the offset was  $0.4 \text{ \AA}$ , which corresponds to approximately 1/10 of a pixel.

The removal of the sky was tried in two ways. First, the sky was removed by subtracting low-order polynomials along the spatial direction of the spectrum. If the redshift could not be clearly determined, usually because the signal from the object was dominated by detector fringing, the sky was removed by subtracting a two-dimensional sky frame that was created from the data itself. The second method removes the fringes at the expense of slightly reducing the signal-to-noise ratio of the extracted spectra.

The process of creating a two-dimensional sky frame is complicated by the fact that the spectrum of the night sky changes with time. Taking a simple median of the two-dimensional spectra and then subtracting the result is generally unsatisfactory. Instead, we combine the two-dimensional spectra and perform the sky subtraction on a column-by-column basis, allowing for the fact that the sky lines on the two-dimensional spectra are slightly curved and that their intensity varies with time. This method also allows one to find and exclude cosmic rays at the same time. The method is described in greater detail in the FORS Data Reduction Cookbook.<sup>19</sup>

### 4. ANALYSIS

Redshifts were measured from the DEIMOS and FORS2 spectra using the Fourier cross-correlation technique of Tonry & Davis (1979). This was implemented using the task `xc_sao` in version 2.4.9 of the `rvsao` radial velocity package (Kurtz & Mink 1998) for the IRAF<sup>20</sup> environment.

We correlated the spectra with the SDSS spectral templates,<sup>21</sup> which have a typical wavelength coverage of  $\sim 3800$ – $9200 \text{ \AA}$ , and the emission-line template supplied in the `rvsao` package. We matched against a subset of stellar templates (covering the whole range of spectral types), the full set of available galaxy templates, and a QSO template. We supplemented the SDSS templates with an additional luminous red galaxy (LRG) template constructed by Eisenstein et al. (2003) which provides coverage over  $2600$ – $4300 \text{ \AA}$  in the rest frame. In the case of the DEIMOS data, we found it necessary to produce a customized emission-line template featuring a split  $3727 \text{ \AA}$  [O II] line, using the `rvsao` task `linespec`, in order to significantly reduce the number of template misidentifications of genuine high-redshift [O II] emission with

<sup>19</sup> Available from <http://www.eso.org/instruments/fors/doc>.

<sup>20</sup> IRAF is distributed by the National Optical Astronomy Observatory, which is operated by the Association of Universities for Research in Astronomy, Inc., under cooperative agreement with the National Science Foundation.

<sup>21</sup> See <http://www.sdss.org/dr5/algorithms/spectemplates/index.html>.

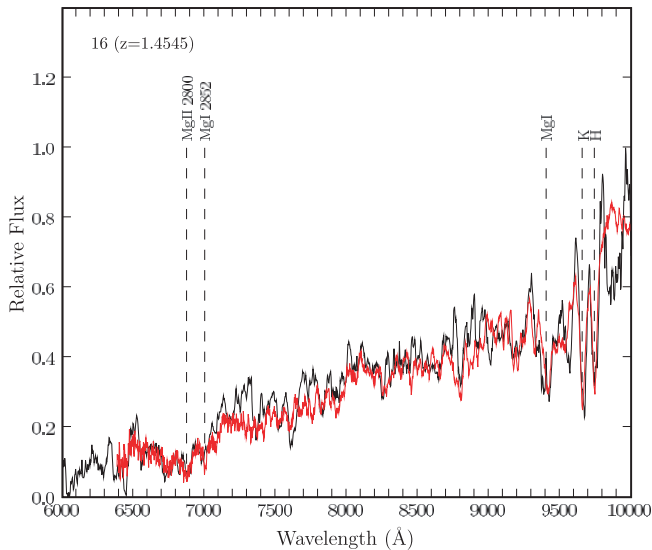


FIG. 1.— Example one-dimensional FORS2 spectrum (smoothed by a 10 pixel boxcar) of a galaxy identified as a member of J2215.9–1738. The LRG spectral template of Eisenstein et al. (2003), which was cross-correlated with the object spectrum in order to obtain the redshift measurement, is overlaid in red.

low-redshift  $H\alpha$  emission. To remove bright sky lines, which are generally a significant feature at the red end of the object spectra, we use the ability of `xcsao` to mask out and replace user-defined regions with a linear interpolation.

Typically, each DEIMOS mask contains  $\sim 100$  slitlets, so we found it desirable to automate the redshift measurements as much as possible. The results of `xcsao` are dependent on the value of the input initial trial redshift, and so we vary this initial redshift over the range  $0.0 < z < 1.8$  in steps of 0.2 and record the measured redshift and associated goodness-of-fit value  $R$ . At the end of this process, we visually inspected every object spectrum, using `xcsao` to mark the appropriate spectral features at the best fitting cross-correlation redshift. In this way we were able to reject some cases of a spurious best-fitting redshift in favor of a correctly measured redshift recorded with a lower  $R$  value. Figure 1 shows an example VLT object spectrum with the redshifted Eisenstein et al. (2003) LRG spectral template overlaid. In some cases the cross-correlation technique did not yield the correct redshift for the object spectrum. This occurred most frequently for FORS2 spectra of objects with  $3727 \text{ \AA}$  [O II] emission. In such cases we measured the object redshift from the centroids of visually identified lines. Uncertainties on redshifts measured with the cross-correlation technique are typically  $\Delta z \sim 10^{-4}$ , as estimated by `xcsao`. In the case of redshifts measured from the centroids of spectral lines, the size of the error is estimated visually: in the case of FORS2 spectra of galaxies identified by [O II] emission, the accuracy with which redshifts can be measured is limited to  $\Delta z \sim 10^{-3}$  by the spectral dispersion per pixel. The technique used to obtain the redshift measurement for each galaxy is noted in Table 2.

All measured redshifts were assigned a quality flag  $Q$  according to the following system:  $Q = 3$  (completely unambiguous, at least two positively identified spectral features);  $Q = 2$  (high confidence that the redshift is correct, one clearly detected feature);  $Q = 1$  (significant doubt that the redshift is correctly identified, one or more weakly detected features). Note that the spectral resolution of the DEIMOS data is sufficient to resolve the two components of the  $3727 \text{ \AA}$  [O II] line—in cases where this is clearly visible, [O II] is counted as two spectral features (i.e., such spectra

are assigned  $Q = 3$ ). We consider only galaxies with  $Q \geq 2$  redshifts in the subsequent discussion.

## 5. RESULTS

Figure 2 shows the redshift distribution of galaxies with  $Q \geq 2$  redshifts located within a  $2'$  radius of the cluster X-ray position. The cluster is clearly identified as the peak in the redshift distribution at  $z = 1.45$ . In addition to the six members reported in Stanford et al. (2006) the new spectroscopic observations yielded a further 15 galaxies with  $Q \geq 2$  redshifts in the range  $1.44 < z < 1.48$  within 2 Mpc of the cluster X-ray position. Table 2 presents a list of the cluster members.

We calculated an initial estimate of the cluster redshift using a biweight location estimator (Beers et al. 1990), applied to all 21 galaxies with  $Q \geq 2$  listed in Table 2, obtaining a value of  $z = 1.459 \pm 0.002$ , where the uncertainty is estimated using a bootstrap resampling technique. Similarly applying a biweight scale estimator (Beers et al. 1990) to obtain an initial estimate of the cluster line-of-sight velocity dispersion, we find  $\sigma_v = 840 \pm 150 \text{ km s}^{-1}$ . However, no selection criteria in either velocity or radial distance from the cluster center were used to derive these initial estimates. More robust estimates of these quantities can be obtained by restricting the membership to those objects found within the virial radius  $R_v$ , as by definition, galaxies within  $R_v$  should be gravitationally bound within the cluster potential well.  $R_v$  can be estimated using our knowledge of the X-ray properties of J2215.9–1738 and some assumptions. The self-similar evolution of  $R_v$ , defined with respect to the critical density (see Voit 2005b), depends only on the cluster X-ray temperature and the value of the Hubble parameter at the cluster redshift  $z$ , i.e.,

$$R_v = 3.80 \beta_T^{1/2} E(z)^{-1} (kT/10 \text{ keV})^{1/2} h_{50}^{-1}, \quad (1)$$

where

$$E(z) = [\Omega_m(1+z)^3 + (1 - \Omega_m - \Omega_\Lambda)(1+z)^2 + \Omega_\Lambda]^{1/2}. \quad (2)$$

$\beta_T$  in equation (1) is the normalization of the virial relation  $GM_v/2R_v = \beta_T kT$ , for which we adopt the value 1.05 (Evrard et al. 1996).  $E(z)$  describes the evolution with redshift of the Hubble parameter.

Using equation (1), the virial radius was estimated to be 1.05 Mpc at  $z = 1.459$ , for the measured temperature of  $kT = 7.4 \text{ keV}$  (Stanford et al. 2006). This distance is equivalent to an angular distance on the sky of  $\simeq 2.1'$ . This estimate of  $R_v$  was then used to select cluster members and refine the measurement of the cluster redshift: applying the biweight location estimator to the 17 galaxies located within  $R_v$  as listed in Table 2, we find that the cluster redshift is  $z = 1.457 \pm 0.002$ . We expect this to be a more robust estimate of the cluster redshift than the initial estimate, as galaxies within  $R_v$  should be gravitationally bound within the cluster.

We determined the cluster line-of-sight velocity dispersion in an iterative fashion. Initially, galaxies within  $R_v$  were selected with peculiar velocities within  $\pm 2000 \text{ km s}^{-1}$  of the cluster velocity corresponding to  $z = 1.457$ , and on subsequent iterations a sigma clipping algorithm was used to discard galaxies with velocities outside of  $\pm 3 \times \sigma_v$  (although in practice, the conservative clipping applied meant that no galaxies were in fact removed from the sample in this way). We obtain a result of  $\sigma_v = 580 \pm 140 \text{ km s}^{-1}$  in the rest-frame from 17 members, where the uncertainty is estimated using a bootstrap resampling technique. Note we have subtracted a contribution of  $\approx 90 \text{ km s}^{-1}$  in order to take into account broadening of the velocity distribution by

TABLE 2  
SPECTROSCOPIC MEMBERS OF CLUSTER J2215.9–1738

Object ID	R.A. (J2000.0)	Decl. (J2000.0)	$z$	$Q^a$	Method <sup>b</sup>	Telescope	Stanford et al. (2006)
Objects within the Virial Radius ( $R_v = 1.05$ Mpc)							
1.....	22 15 58.478	−17 37 58.58	$1.452 \pm 0.001$	3	V	Keck	Object 14389
2.....	22 15 58.905	−17 37 59.12	$1.451 \pm 0.001$	3	V	Keck	Object 14378
3.....	22 15 59.035	−17 38 02.50	$1.454 \pm 0.001$	2	V	VLT	Object 14339
4.....	22 15 58.480	−17 38 10.71	$1.4650 \pm 0.0003$	3	X	VLT	Object 14289
5.....	22 15 59.080	−17 38 02.40	$1.459 \pm 0.001$	2	V	VLT	...
6.....	22 15 58.380	−17 38 10.71	$1.466 \pm 0.001$	1	V	VLT	...
7.....	22 15 58.850	−17 38 10.89	$1.453 \pm 0.001$	2	V	VLT	...
8.....	22 15 59.174	−17 37 53.94	$1.4619 \pm 0.0003$	3	X	Keck	...
9.....	22 15 57.441	−17 37 57.86	$1.454 \pm 0.001$	2	V	VLT	...
10.....	22 15 59.707	−17 37 59.16	$1.469 \pm 0.001$	1	V	VLT	...
11.....	22 15 57.220	−17 38 07.80	$1.4502 \pm 0.0001$	3	X	Keck	...
12.....	22 15 59.870	−17 37 59.23	$1.449 \pm 0.002$	1	V	VLT	...
13.....	22 15 57.232	−17 37 53.11	$1.4537 \pm 0.0001$	3	X	Keck	Object 14478
14.....	22 15 58.363	−17 37 37.48	$1.4526 \pm 0.0001$	3	X	Keck	Object 14651
15.....	22 16 00.705	−17 37 51.02	$1.471 \pm 0.001$	2	V	Keck	...
16.....	22 15 56.186	−17 37 49.83	$1.4545 \pm 0.0003$	3	X	VLT	...
17.....	22 15 56.059	−17 37 49.90	$1.461 \pm 0.001$	2	V	VLT	...
18.....	22 15 59.448	−17 38 38.18	$1.4569 \pm 0.0001$	3	X	Keck	...
19.....	22 15 56.316	−17 37 37.95	$1.449 \pm 0.001$	1	V	VLT	...
20.....	22 16 03.096	−17 38 08.05	$1.462 \pm 0.001$	1	V	VLT	...
21.....	22 16 03.158	−17 38 29.68	$1.4650 \pm 0.0002$	1	X	VLT	...
22.....	22 15 52.483	−17 37 46.16	$1.461 \pm 0.001$	2	V	VLT	...
23.....	22 15 51.664	−17 37 11.96	$1.4612 \pm 0.0004$	3	X	VLT	...
Additional Objects within 2 Mpc							
24.....	22 15 54.921	−17 40 13.29	$1.4752 \pm 0.0003$	2	X	Keck	...
25.....	22 16 09.525	−17 38 26.23	$1.4613 \pm 0.0001$	3	X	Keck	...
26.....	22 16 10.303	−17 36 23.36	$1.4632 \pm 0.0001$	3	X	Keck	...
27.....	22 16 04.156	−17 34 23.08	$1.4737 \pm 0.0001$	3	X	Keck	...

NOTE.—Units of right ascension are hours, minutes, and seconds, and units of declination are degrees, arcminutes, and arcseconds.

<sup>a</sup> Redshifts with  $Q = 1$  are not secure and were not used in the analysis in § 5.

<sup>b</sup> X = cross-correlation, V = visual inspection (see § 4 for details).

uncertainties in the redshift measurements, following Danese et al. (1980). If, alternatively, we select galaxies within a fixed radius of 2 Mpc instead of using the virial radius, we obtain  $\sigma_v = 620 \pm 120$  km s<sup>−1</sup> from 19 galaxies by the same method. The value of  $\sigma_v$  we obtain for J2215.9–1738 is of similar size to the only other

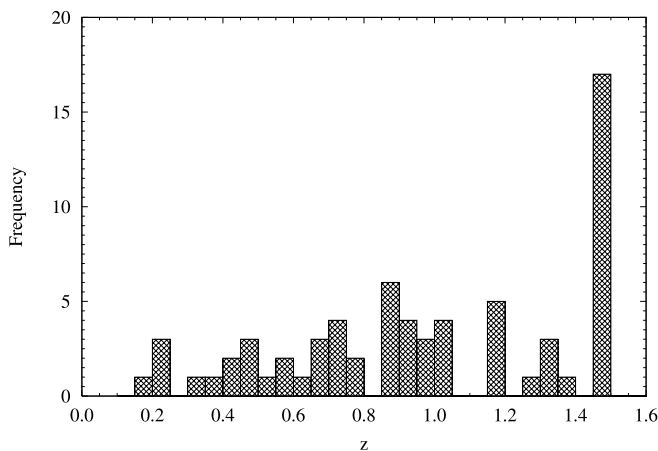


FIG. 2.—Distribution of  $Q \geq 2$  galaxy redshifts (in bins of width 0.05 in  $z$ ) within a 2' radius of the X-ray position of J2215.9–1738. The cluster is clearly identified by the peak at  $z = 1.45$ .

$z > 1.3$  cluster so far discovered, XMMU J2235.3–2557 at  $z = 1.39$ , which has  $\sigma_v = 762 \pm 265$  km s<sup>−1</sup> (Mullis et al. 2005).

In Figure 3 we plot the velocity distribution of all the objects with  $Q \geq 2$  redshifts listed in Table 2, centered on the velocity corresponding to  $z = 1.457$ . The 17 members identified to lie within the virial radius of the cluster are highlighted. At first glance, the velocity distribution of the galaxies located within  $R_v$  appears bimodal. However, as shown by Figure 4, there is no clear separation of the two velocity subclumps in the plane of the sky: therefore if substructure is present, it must be aligned close to the line of sight. The Shapiro-Wilks test indicates that the peculiar velocity distribution is marginally consistent with being drawn from a Gaussian distribution, at the 10% level. We also performed the dip test of unimodality (Hartigan & Hartigan 1985) on the velocity distribution, obtaining a value for the dip statistic of 0.0962. There is a <20% probability of obtaining a dip value larger than this value for a sample size of 17 when drawing from a uniform distribution. As a further test, we used Monte Carlo simulations to determine the probability of obtaining a value for the dip statistic as large as measured by drawing 17 values at random from a single Gaussian distribution. From 10,000 realizations, we determine that there is a 6% probability of obtaining a dip statistic larger than 0.0962, when drawing from a single Gaussian distribution with standard deviation equal to the cluster velocity dispersion.

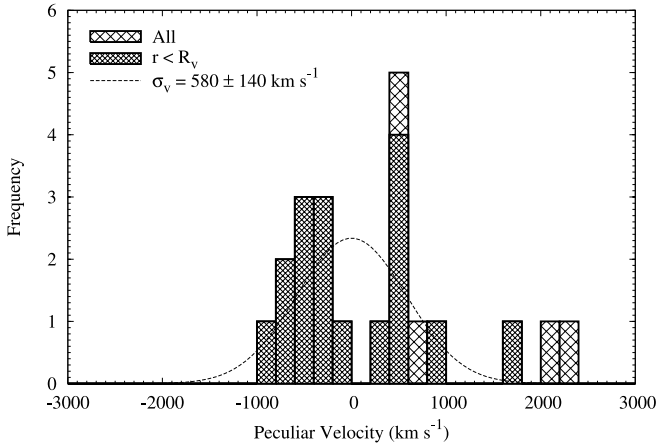


FIG. 3.— Velocity histogram (in  $200 \text{ km s}^{-1}$  bins), centered on the velocity corresponding to the adopted cluster redshift of  $z = 1.457$  (see the text in § 5). Only galaxies with  $Q \geq 2$  redshifts are plotted. The shading indicates the following as appropriate: galaxies located within  $\pm 2000 \text{ km s}^{-1}$  of the cluster redshift and inside the virial radius ( $r < R_v$ ), as determined from the X-ray temperature (eq. [1]); and all 21 galaxies with  $Q \geq 2$  redshifts listed in Table 2. The dashed line is a Gaussian distribution with standard deviation equal to the velocity dispersion calculated using galaxies within  $R_v$ , normalized to the total number of objects within this sample.

We conclude that on the basis of the present data there is mild evidence that the cluster velocity distribution deviates from that expected from a single Gaussian. Although it is very unlikely that the possible bimodal velocity distribution shown in Figure 3 is the result of a selection effect given the simple color-magnitude criteria used to select target galaxies (§ 2 above), it may arise due to incompleteness, given the small number of objects in the sample. More data are clearly needed to confirm if significant substructure is present.

## 6. DISCUSSION

J2215.9–1738 is the most distant cluster currently known for which measurements of the X-ray luminosity, temperature, and line-of-sight galaxy velocity dispersion are available. We now ask the question, are the observed cluster properties consistent with those expected from studies of X-ray scaling relations at low redshift?

### 6.1. The $L_X$ - $T$ relation at $z \sim 1.5$

It has been known for some time that the slope of the low redshift  $L_X$ - $T$  relation is inconsistent with that expected from self-similar models (i.e., where gravitational processes are solely responsible for setting the observed X-ray properties of clusters), which predict  $L_X \propto T^2$  (Kaiser 1986). Many studies of the  $L_X$ - $T$  relation have shown consistently that the observed slope of the relation is closer to  $L_X \propto T^3$  (e.g., David et al. 1993; Markevitch 1998; Arnaud & Evrard 1999), indicating that some form of nongravitational heating has taken place within clusters. However, several studies using cluster samples up to  $z \sim 1$  have found that although the slope of the  $L_X$ - $T$  relation departs from the expected self-similar value, the evolution of the relation is nevertheless consistent with self-similarity, although the scatter in such measurements is large (e.g., Maughan et al. 2006a). The self-similar evolution of the observed local bolometric  $L_X$ - $T$  relation can be expressed as

$$E(z)^{-1} L_X = 6.35 \left( \frac{kT}{6 \text{ keV}} \right)^{2.64}, \quad (3)$$

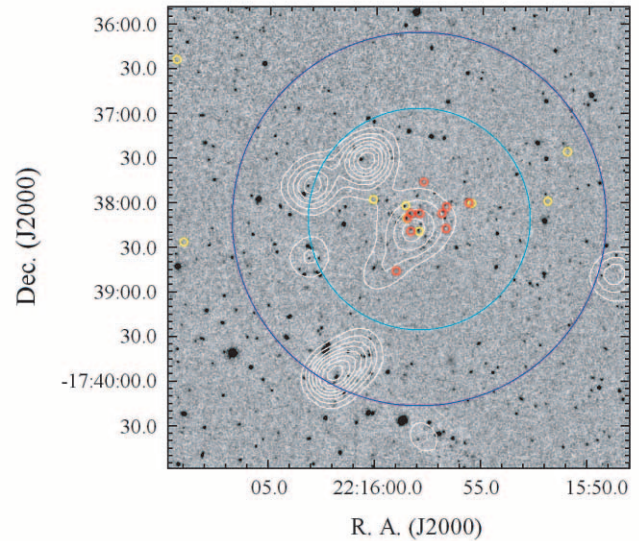


FIG. 4.—  $K_s$ -band image ( $5.2' \times 5.2'$ ) of J2215.9–1738, with X-ray contours overlaid in white. Objects spectroscopically identified as cluster members with  $Q \geq 2$  within 3 times the velocity dispersion of the cluster and within a projected 2 Mpc radius are highlighted (see text). Members with  $z < 1.457$  are highlighted in red; members with  $z > 1.457$  are highlighted in yellow. There is no clear spatial separation between the two sets of highlighted objects, indicating that any substructure must be along the line of sight. Note that some members are not detected in the  $K_s$ -band image. The dark blue circle marks the cluster virial radius of 1.05 Mpc, as calculated using eq. (1); the light blue circle marks the radius  $R_{200} = 0.63 \text{ Mpc}$ , calculated from the cluster velocity dispersion using eq. (7).

where  $E(z)$  is given by equation (2). The slope of 2.64 adopted in equation (3) is the slope of the local  $L_X$ - $T$  relation as measured by Markevitch (1998). The units of  $L_X$  in equation (3) are  $10^{44} \text{ ergs s}^{-1}$ .

Using equation (3) to predict the expected X-ray luminosity of J2215.9–1738, assuming the measured cluster temperature of  $kT = 7.4^{+1.6}_{-1.1} \text{ keV}$ , we obtain  $L_X \sim (1.6\text{--}4.2) \times 10^{45} \text{ ergs s}^{-1}$ , neglecting the scatter in the relation. This is significantly larger than the measured luminosity of  $4.39^{+0.46}_{-0.37} \times 10^{44} \text{ ergs s}^{-1}$ . The discrepancy is naturally reduced if we adopt  $kT = 6.5^{+1.6}_{-1.1} \text{ keV}$ , the measured temperature if an undetected central point source is present (Stanford et al. 2006), but the measured luminosity is still significantly lower than that which would be expected from self-similar evolution of the local  $L_X$ - $T$  relation.

A possible solution to this discrepancy is that the evolution of the  $L_X$ - $T$  relation is more accurately described with the inclusion of the effects of nongravitational heating and radiative cooling (see, e.g., the review by Voit 2005a). Radiative cooling has the effect of raising the temperature of the intracluster medium (ICM), because selectively removing the low-temperature gas leads to a higher average temperature for the remaining material in the gas phase (Voit et al. 2002). However, cooling is a runaway process that must be regulated by some form of heating, otherwise the cooling gas should condense to produce significant amounts of star formation in cluster cores—which is not what is observed (e.g., Balogh et al. 2001). Heating of the ICM by supernovae, star formation, and/or active galactic nuclei (AGNs) is thought to provide the feedback mechanism required to prevent overcooling, and has been postulated for some time as the solution to the well-known “cooling flow” problem in clusters (see, e.g., the review by Fabian 1994). Hydrodynamical simulations including the effects of radiative cooling, star formation, and supernovae feedback are able to reproduce the observed  $L_X$ - $T$  relation quite well, finding a slope in the range 2.5–3 (e.g., Kay et al. 2007; Borgani et al. 2004). However, the redshift evolution of the normalization

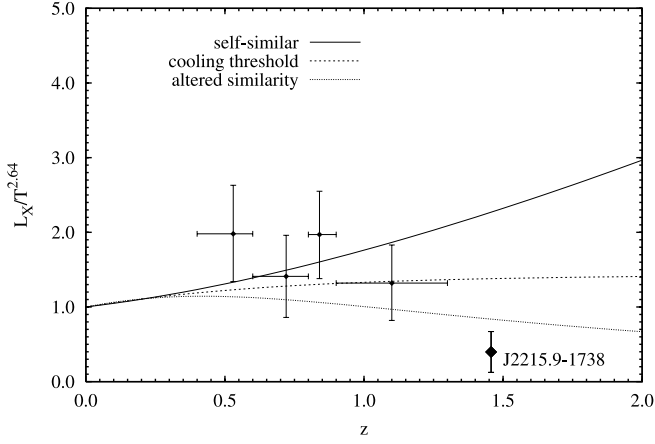


FIG. 5.— Comparison of  $L_X/T^{2.64}$  for J2215.9–1738 with predicted evolution of the normalization of the  $L_X$ - $T$  relation for the cases of self-similarity [ $E(z)$ ], cooling threshold ( $t_0/[E(z)t(z)]$ ), and altered similarity ( $t_0^2/[E(z)^3t(z)^2]$ ). J2215.9–1738 is clearly more consistent with these latter two models, which are representative of the form of evolution expected when the effect of feedback on the intra-cluster medium is taken into account. The points are the data of Maughan et al. (2006a); vertical error bars are equal to the weighted standard deviation at each redshift, and horizontal error bars indicate the width of each redshift bin.

of the relation when such effects are taken into account is quite different to the self-similar case, in which clusters are expected to become more luminous for a given temperature as redshift increases; in particular, simulations that include the effects of feedback show a mildly negative evolution as redshift increases (Muanwong et al. 2006).

Voit (2005b) provides analytic predictions for the evolution of the  $L_X$ - $T$  relation normalization derived from a semianalytic framework that includes the effects of both nongravitational heating and radiative cooling. The modified entropy models of Voit et al. (2002) show that introducing a cooling threshold, where gas with entropy less than  $K_c = T^{2/3}t(z)^{2/3}$  radiates away its thermal energy within a timescale equal to the age of the universe  $t(z)$ , can steepen the expected  $L_X$ - $T$  relation to  $L_X \propto T^{2.5}$ , closer to the observed value at low redshift. Furthermore, the predicted evolution of the  $L_X$ - $T$  relation in this scenario is quite different to the self-similar case:

$$L_X \propto kT^{2.5}E(z)^{-1}t(z)^{-1}. \quad (4)$$

The additional inclusion of the effect of smooth accretion of gas by clusters modifies the expected form of the  $L_X$ - $T$  relation to  $L_X \propto T^3$ , and leads to the so called “altered similarity” evolution of the relation (Voit & Ponman 2003; Voit et al. 2003):

$$L_X \propto kT^3E(z)^{-3}t(z)^{-2}. \quad (5)$$

Figure 5, based on Figure 14 of Maughan et al. (2006a), shows the position of J2215.9–1738 (assuming the Markevitch 1998  $L_X$ - $T$  relation) relative to the self-similar (eq. [3]), cooling threshold (eq. [4]), and altered similarity (eq. [5]) predictions for the evolution of the  $L_X$ - $T$  relation normalization. The data points in Figure 5 are taken from Maughan et al. (2006a) and represent the weighted mean values (assuming the Markevitch 1998 relation) in each redshift bin for their sample of 33 clusters. The error bars are the weighted standard deviation, and illustrate the large amount of scatter in  $L_X/T^{2.64}$ . Nevertheless, it can be seen that the position of J2215.9–1738 is more consistent with the cooling threshold and altered similarity evolution predictions

than with self-similarity. It is clear from Figure 5 that observations of much larger samples of clusters at high redshift are required if the evolution of the  $L_X$ - $T$  relation is to be adequately constrained.

A possible alternative explanation to the relative faintness of the cluster X-ray emission in comparison to its temperature is that the cluster has undergone a merger event in its recent past. As shown in § 5, although the velocity distribution of J2215.9–1738 is marginally consistent with a single Gaussian distribution (at the  $\sim 10\%$  level), there is marginal evidence (at the  $< 2\sigma$  level) from the Hartigan & Hartigan (1985) dip test in favor of a bimodal distribution. Clearly, there is a strong possibility that further spectroscopic observations may reveal the presence of significant substructure within the cluster, and this would not be unexpected in the hierarchical structure formation scenario, as the frequency of cluster mergers is expected to increase with redshift. The numerical simulations of Poole et al. (2007; see also Ricker & Sarazin 2001) show that although both  $L_X$  and  $T$  are boosted significantly for approximately a sound crossing time during the first pericentric passage of two initially relaxed clusters, in the case of an off-axis merger the resulting remnant can have luminosity up to 50% lower than would be expected from the observed cluster mass-scaling relations  $\sim$  a few Gyr after the encounter, with  $T$  boosted by  $\sim 10\%$ . Assuming that this is the case, the discrepancy between the observed luminosity and that implied by equation (3) (assuming  $kT = 7.4$  keV) falls to  $\sim 2\sigma$ .

### 6.2. The $L_X$ - $\sigma_v$ Relation at $z \sim 1.5$

Under the assumptions that clusters are virialized, with isothermal gas and galaxy distributions, and that the gas mass bound to clusters is proportional to the virial mass, then the expected relationship between X-ray luminosity and galaxy velocity dispersion is  $L_X \propto \sigma_v^4$  (Quintana & Melnick 1982). This relation has been measured for clusters in the local universe and generally found to be consistent with the expected result (e.g., Ortiz-Gil et al. 2004; Hilton et al. 2005), albeit with large scatter. In the case where the local relation does not evolve, using the  $L_X$ - $\sigma_v$  relation derived by Ortiz-Gil et al. (2004) i.e.,  $L_X \propto \sigma_v^{4.1 \pm 0.3}$ , we expect the bolometric X-ray luminosity of J2215.9–1738 to be  $L_X \sim (1.1_{-0.7}^{+1.6}) \times 10^{44}$  ergs  $s^{-1}$ .

We can compare this result with that expected if the evolution of the relation is self-similar by modifying the Ortiz-Gil et al. (2004) relation to the form

$$E(z)^{-1}L_X = 10^{32.72} \times \sigma_v^{4.1}, \quad (6)$$

where  $L_X$  is in units of ergs  $s^{-1}$  and  $\sigma_v$  is in units of  $\text{km s}^{-1}$ .

Accounting for self-similar evolution using equation (6), we find that for  $\sigma_v = 580 \pm 140$   $\text{km s}^{-1}$ , we expect  $L_X \sim (2.6_{-1.8}^{+3.6}) \times 10^{44}$  ergs  $s^{-1}$ . Due to the large uncertainty in  $\sigma_v$ , both the no-evolution and self-similar evolution cases are consistent with the measured X-ray luminosity of J2215.9–1738, and we are therefore unable to discriminate between them.

### 6.3. The $\sigma_v$ - $T$ Relation at $z \sim 1.5$

The assumption of isothermality for both the gas and galaxy velocity distributions leads to the parameterization  $\beta = \sigma_v^2 \mu m_p / kT$ , where  $\mu$  represents the mean molecular weight and  $m_p$  is the proton mass. By adopting  $\beta = 1$ , we can test whether the measured velocity dispersion and temperature are consistent with equipartition of energy between the gas and galaxies. This is expected in the case of self-similar evolution, where the gas temperature and galaxy



velocity dispersion are assumed to both perfectly trace the depth of the gravitational potential well. Wu et al. (1999) measured the  $\sigma_v$ - $T$  relation from a heterogeneous sample of 92 clusters drawn from the literature, finding it to be consistent with  $\beta \approx 0.9$ –1.0.

We find that the predicted X-ray temperature for  $\sigma_v = 580 \pm 140 \text{ km s}^{-1}$  is  $kT_{\text{pred}} = 2.7^{+1.3}_{-1.0} \text{ keV}$  (assuming  $\mu = 0.58$ ; Edge et al. 1992). The difference between the measured X-ray temperature of  $kT = 7.4^{+1.6}_{-1.1} \text{ keV}$  and  $kT_{\text{pred}}$  is  $\Delta kT = 5.4 \pm 1.7 \text{ keV}$ , a  $>3 \sigma$  discrepancy. If we assume that the cluster contains an unresolved central X-ray point source, then the measured X-ray temperature is  $kT = 6.5^{+1.6}_{-1.1} \text{ keV}$  (Stanford et al. 2006), and the discrepancy with  $kT_{\text{pred}}$  falls to 2–3  $\sigma$ . J2215.9–1738 therefore appears to deviate significantly from the  $\sigma_v$ - $T$  relation. Another way of stating this is to calculate  $\beta$  directly from the measured velocity dispersion and temperature. We find that for  $kT = 7.4 \text{ keV}$  and  $\sigma_v = 580 \text{ km s}^{-1}$ ,  $\beta = 0.28 \pm 0.14$ . In the case of  $kT = 6.5 \text{ keV}$ , we obtain a consistent result,  $\beta = 0.31 \pm 0.16$ . This indicates that the gaseous component of the cluster has  $\sim 2$ –3 times the kinetic energy per unit mass than the galaxies.

The value of  $\beta$  we obtain for this cluster is therefore incompatible with the expectation from self-similar evolution, for which, by definition,  $\beta = 1$  at all redshifts. This suggests that the virial radius used to select cluster members (eq. [1]), has been overestimated. We can test the effect of this on our results by calculating  $\sigma_v$  within a different characteristic radius defined independently of the X-ray temperature,

$$R_{200} = \frac{\sqrt{3}\sigma_v}{10H(z)}, \quad (7)$$

where  $R_{200}$  is the radius that encloses a mean density 200 times the critical density at a given redshift (roughly equivalent to the virial radius, Carlberg et al. 1997), and  $H(z)$  is the Hubble parameter at redshift  $z$ .

Using equation (7) with the initial estimate of  $\sigma_v = 840 \pm 150 \text{ km s}^{-1}$ , obtained with no restriction on the selection of cluster members in radial distance (i.e., using all 21 galaxies with  $Q \geq 2$  redshifts listed in Table 2; see § 5 above), we find  $R_{200} = 0.91 \pm 0.15 \text{ Mpc}$ . Calculating the cluster redshift and velocity dispersion using members selected within this radius in a similar fashion to § 5 above, we obtain  $z = 1.456 \pm 0.002$  and  $\sigma_v = 580 \pm 190 \text{ km s}^{-1}$ , respectively, from 16 members. This is consistent with the results found in § 5 when selecting members within  $R_v$  as estimated using the cluster X-ray temperature, although the larger uncertainty in  $\sigma_v$  in this case reduces the discrepancy between the temperature implied by the velocity dispersion and the measured X-ray temperature to the 2–3  $\sigma$  level. Further iterations in estimating  $R_{200}$  and  $\sigma_v$  in this manner naturally return consistent results, converging to  $R_{200} = 0.63 \pm 0.15 \text{ Mpc}$ ,  $\sigma_v = 570 \pm 190 \text{ km s}^{-1}$  from 15 members.

We now consider ways in which  $T$  could be increased above its expected value, or equivalently, how  $\sigma_v$  could have been reduced. As stated in § 6.1, one way to boost  $T$  significantly is through cluster mergers (Ricker & Sarazin 2001; Poole et al. 2007). This is a possibility, as there is marginal evidence that the observed galaxy velocity distribution is inconsistent with a single Gaussian (§ 5). Another way in which our result could be reconciled with the self-similar expectation is if the cluster exhibits a significant velocity distribution anisotropy. However, the required anisotropy would be large: from the  $\sigma_v$ - $T$  relation measured by (Wu et al. 1999), we require  $\sigma_v \sim 1100 \text{ km s}^{-1}$  to reproduce the measured X-ray temperature of 7.4 keV, which is significantly larger than the measured velocity dispersion.

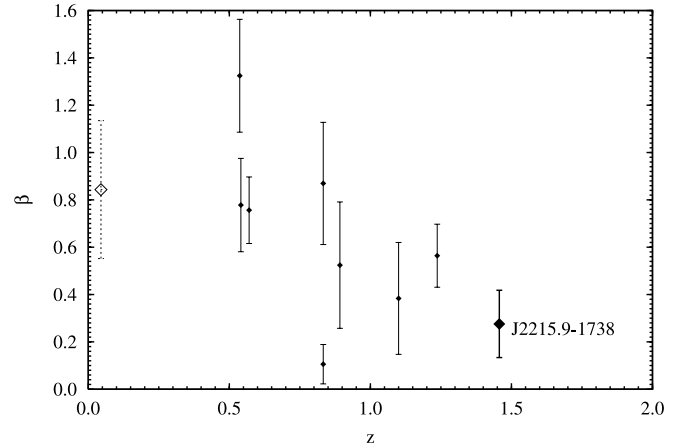


FIG. 6.—Comparison of J2215.9–1738 with calculated values of  $\beta$  vs. redshift for a heterogeneous sample of clusters at  $z > 0.5$  drawn from the literature, for which the uncertainty in  $\beta < 0.3$ . At high redshift, there appears to be a tendency for  $\beta$  to be lower than expected for self-similar evolution of the intracluster medium. The open point is the mean  $\beta$  (with error bars equal to the standard deviation) for 59 clusters at  $z < 0.1$  drawn from the sample of Wu et al. (1999).

We note that J2215.9–1738 is not the only high-redshift cluster to possess a low  $\beta$  value. Lubin et al. (2004) extended the  $\sigma_v$ - $T$  relation significantly in redshift using data drawn from the literature for 11 clusters at  $z > 0.5$ . They noted that although the  $z > 0.5$  clusters are consistent within the errors of the local  $\sigma_v$ - $T$  relation, their temperatures are higher by a factor of  $\sim 1.4$  on average for a given velocity dispersion. Most recently, Demarco et al. (2007) carried out a study of the dynamical structure of RDCS J1252.9–2927 at  $z = 1.237$ , and found that the temperature implied by the galaxy velocity dispersion (estimated using the  $\sigma_v$ - $T$  relation) is lower than the measured X-ray temperature at  $>3 \sigma$  significance. In Figure 6 we plot calculated values of  $\beta$  versus redshift for objects drawn from the  $z > 0.5$  cluster sample of Lubin et al. (2004) supplemented by other high- $z$  clusters for which measurements of velocity dispersion and temperature have appeared in the literature since this work. Only objects where the uncertainty in  $\beta$  is  $< 0.3$  are plotted (errors are combined in quadrature), and the sample used is listed in Table 3. For comparison, we also plot the mean  $\beta$  (with error bars equal to the standard deviation) for 59 clusters at  $z < 0.1$  drawn from the Wu et al. (1999) sample, where again, only clusters for which the uncertainty in  $\beta$  is  $< 0.3$  have been included.

Figure 6 shows a trend of  $\beta$  decreasing toward higher redshift, although there are few clusters with velocity dispersions and temperatures measured with reasonable precision at high redshifts. As at least two of the clusters in the literature sample (RDCS J1252.9–2927 and RX J0152.7–1357) are confirmed multicomponent systems, the trend in Figure 6 may represent the increasing frequency of cluster mergers expected at high redshifts in the hierarchical structure formation scenario. Alternatively, as it is well known that nongravitational processes must affect the evolution of the ICM in order to explain the observed  $L_X$ - $T$  relation at low-redshift, we may suppose that these same processes could result in the evolution of the  $\sigma_v$ - $T$  relation with redshift. It is easy to imagine that heating by supernovae or AGNs, for example, could modify the X-ray temperature above the self-similar expectation, but it is difficult to think of a process which could act to reduce the galaxy velocity dispersion significantly. A comparison with the properties of clusters in the “Millennium Gas” simulations (F. R. Pearce et al., in preparation), which have sufficient volume to resolve  $kT > 7 \text{ keV}$  clusters at  $z > 1$ , should provide insight

TABLE 3  
LITERATURE DATA USED IN FIGURE 6

Object	$z$	$\sigma_v$ (km s <sup>-1</sup> )	$T$ (keV)	Reference(s)
RX J0848+4456.....	0.570	670 ± 50	3.6 ± 0.4	Holden et al. (2001)
RDCS J0910+5422.....	1.10	675 ± 190	7.2 ± 1.8	Stanford et al. (2002), Mei et al. (2006)
RX J0152.7–1357 S.....	0.833	301 ± 115	5.2 ± 1.0	Girardi et al. (2005), Maughan et al. (2006b)
RX J0152.7–1357 N.....	0.833	888 ± 110	5.5 ± 0.9	Girardi et al. (2005), Maughan et al. (2006b)
MS 0016+1609.....	0.541	1127 ± 140	9.9 ± 0.5	Vikhlinin et al. (2002), Borgani et al. (1999)
MS 0451–0305.....	0.537	1330 ± 100	8.1 ± 0.8	Vikhlinin et al. (2002), Borgani et al. (1999)
CI J1226.9+3332.....	0.892	997 ± 250	11.5 ± 1.0	Maughan et al. (2004)
RDCS J1252.9–2927.....	1.237	747 ± 80	6.0 ± 0.6	Rosati et al. (2004), Demarco et al. (2007)

into which process is responsible for the observed properties of J2215.9–1738.

## 7. CONCLUSIONS

We have increased the number of known members of the most distant galaxy cluster known, XMMXCS J2215.9–1738 at  $z = 1.457$ , to 17 objects located within the virial radius as estimated using the cluster X-ray temperature, and have measured its line-of-sight velocity dispersion to be  $\sigma_v = 580 \pm 140$  km s<sup>-1</sup>. For the measured X-ray temperature of  $7.4^{+1.6}_{-1.1}$  keV (Stanford et al. 2006), this is inconsistent with the hypothesis of equipartition of energy between the gas and the galaxies ( $\beta = \sigma_v^2 \mu m_p / kT = 1$ ) at the  $\approx 3 \sigma$  level, and indicates that the intracluster medium contains 2–3 times the kinetic energy of the galaxies. The cluster X-ray emission is significantly fainter than expected from self-similar evolution of the local observed  $L_X$ - $T$  relation.

The cluster properties could be the result of the cluster undergoing a merger within the last few Gyr, although we find only mild evidence from the present data that the velocity distribution is inconsistent with being drawn from a single Gaussian. An alternative possibility is that the effect of heating of the intracluster medium by supernovae and/or AGNs is responsible. Clearly, study of a large sample of high-redshift X-ray clusters is required in order for the evolution of the cluster scaling relations to be adequately constrained.

We thank the anonymous referee for some helpful comments which helped to improve the quality of this paper. This work is

based on data obtained by *XMM-Newton*, an ESA science mission funded by contributions from ESA member states and from NASA. We acknowledge financial support from the NASA-LTSA program, the RAS Hosie Bequest, Liverpool John Moores University, the Institute for Astronomy at the University of Edinburgh, the *XMM-Newton* and *Chandra* guest observer programs, Carnegie Mellon University, the NSF, and PPARC. This work was performed under the auspices of the US Department of Energy, National Nuclear Security Administration by the University of California, Lawrence Livermore National Laboratory under contract W-7405-Eng-48. This work was supported in part by the Director, Office of Science, Office of High Energy and Nuclear Physics, of the US Department of Energy under contract AC02-05CH11231. This research made use of the NASA/IPAC Extragalactic Database, the SIMBAD facility at CDS, the NASA/GSFC-supported XSPEC software, and the ESO Imaging Survey. Based in part on observations obtained at the European Southern Observatory (ESO Programme 078.A-0060). The W. M. Keck Observatory is a scientific partnership between the University of California and the California Institute of Technology, made possible by a generous gift of the W. M. Keck Foundation. The authors wish to recognize and acknowledge the very significant cultural role and reverence that the summit of Mauna Kea has always had within the indigenous Hawaiian community; we are fortunate to have the opportunity to conduct observations from this mountain. The analysis pipeline used to reduce the DEIMOS data was developed at UC Berkeley with support from NSF grant AST 00-71048.

*Facilities:* Keck:II, VLT:Antu, XMM.

## REFERENCES

- Allen, S. W., et al. 2004, MNRAS, 353, 457  
 Andreon, S., et al. 2005, MNRAS, 359, 1250  
 Appenzeller, I., et al. 1998, Messenger, 94, 1  
 Arnaud, M., & Evrard, A. E. 1999, MNRAS, 305, 631  
 Astier, P., et al. 2006, A&A, 447, 31  
 Balogh, M. L., et al. 2001, MNRAS, 326, 1228  
 Beers, T. C., Flynn, K., & Gebhardt, K. 1990, AJ, 100, 32  
 Blakeslee, J. P., et al. 2003, ApJ, 596, L143  
 Borgani, S., et al. 1999, ApJ, 527, 561  
 ———. 2001, ApJ, 561, 13  
 ———. 2004, MNRAS, 348, 1078  
 Bremer, M. N., et al. 2006, MNRAS, 371, 1427  
 Brodwin, M., et al. 2006, ApJ, 651, 791  
 Carlberg, R. G., Yee, H. K. C., & Ellingson, E. 1997, ApJ, 478, 462  
 Carlstrom, J. E., Holder, G. P., & Reese, E. D. 2002, ARA&A, 40, 643  
 Collins, C. A., et al. 2000, MNRAS, 319, 939  
 Danese, L., de Zotti, G., & di Tullio, G. 1980, A&A, 82, 322  
 David, L., Slyz, A., Jones, C., Forman, W., Vrtilsek, S. D., & Arnaud, K. A. 1993, ApJ, 412, 479  
 Davis, M., et al. 2003, Proc. SPIE, 4834, 161  
 Demarco, R., et al. 2007, ApJ, 663, 164  
 Edge, A. C., Stewart, G. C., & Fabian, A. C. 1992, MNRAS, 258, 177  
 Eisenstein, D. J., et al. 2003, ApJ, 585, 694  
 Ettori, S., Tozzi, P., Borgani, S., & Rosati, P. 2004, A&A, 417, 13  
 Evrard, A. E., Metzler, C. A., & Navarro, J. F. 1996, ApJ, 469, 494  
 Faber, S. M., et al. 2003, Proc. SPIE, 4841, 1657  
 Fabian, A. C. 1994, ARA&A, 32, 277  
 Girardi, M., et al. 2005, A&A, 442, 29  
 Hartigan, J. A., & Hartigan, P. M. 1985, Ann. Stat., 13, 70  
 Hashimoto, Y., et al. 2004, A&A, 417, 819  
 Hilton, M., et al. 2005, MNRAS, 363, 661  
 Holden, B. P., et al. 2001, AJ, 122, 629  
 Horne, K. 1986, PASP, 98, 609  
 Kaiser, N. 1986, MNRAS, 222, 323  
 Kay, S. T., et al. 2007, MNRAS, 377, 317  
 Kurtz, M. J., & Mink, D. J. 1998, PASP, 110, 934  
 Lubin, L. M., Mulchaey, J. S., & Postman, M. 2004, ApJ, 601, L9  
 Lumb, D. H., et al. 2004, A&A, 420, 853  
 Markevitch, M. 1998, ApJ, 504, 27  
 Maughan, B. J., et al. 2004, MNRAS, 351, 1193  
 ———. 2006a, MNRAS, 365, 509  
 ———. 2006b, ApJ, 640, 219

- Mei, S., et al. 2006, *ApJ*, 639, 81  
Mohr, J. J. 2005, in *ASP Conf. Ser. 339, Observing Dark Energy*, ed. S. C. Wolff & T. R. Lauer (San Francisco: ASP), 140  
Muanwong, O., Kay, S. T., & Thomas, P. A. 2006, *ApJ*, 649, 640  
Mullis, C. R., et al. 2005, *ApJ*, 623, L85  
Ortiz-Gil, A., et al. 2004, *MNRAS*, 348, 325  
Osterbrock, D. E., & Martel, A. 1992, *PASP*, 104, 76  
Poole, G. B., et al. 2007, preprint (arXiv: 0708.2259P)  
Quintana, H., & Melnick, J. 1982, *AJ*, 87, 972  
Reiprich, T. H., & Böhringer, H. 2002, *ApJ*, 567, 716  
Ricker, P. M., & Sarazin, C. L. 2001, *ApJ*, 561, 621  
Riess, A. G., et al. 2007, *ApJ*, 659, 98  
Romer, A. K., et al. 2001, *ApJ*, 547, 594  
Rosati, P., et al. 1999, *AJ*, 118, 76  
———. 2004, *AJ*, 127, 230  
Schuecker, P., et al. 2003, *A&A*, 398, 867  
Spergel, D. N., et al. 2007, *ApJS*, 170, 377  
Stanford, S. A., et al. 1997, *AJ*, 114, 2232  
———. 2002, *AJ*, 123, 619  
———. 2005, *ApJ*, 634, L129  
———. 2006, *ApJ*, 646, L13  
Tonry, J., & Davis, M. 1979, *AJ*, 84, 1511  
Vikhlinin, A., et al. 2002, *ApJ*, 578, L107  
Voit, G. M. 2005a, *Rev. Mod. Phys.*, 77, 207  
———. 2005b, *Adv. Space Res.*, 36, 701  
Voit, G. M., & Ponman, T. J. 2003, *ApJ*, 594, L75  
Voit, G. M., et al. 2002, *ApJ*, 576, 601  
———. 2003, *ApJ*, 593, 272  
Wood-Vasey, W. M., et al. 2007, *ApJ*, 666, 694  
Wu, X.-P., Xue, Y.-J., & Fang, L.-Z. 1999, *ApJ*, 524, 22